

03V

16 MM VALVES - MECHANICAL AND MANUAL OPERATORS



16 MM VALVES



TECHNICAL CHARACTERISTICS



Reference Standard

- 1907/2006
REACH ✓
- 2011/65/CE
RoHS ✓
- PED
2014/68/UE



Component Parts and Materials

- Anodised aluminium body
- Stainless Steel Spring
- NBR seals

| | | |
|--|-------------------------------|----------------------------|
| | | 1/8 |
| | THREADED | G 1/8 |
| | 6 bar FLOW RATE with Δp 1 bar | 350 NI/min |
| | OPERATING PRESSURE | 2 ÷ 10 bar 29 ÷ 145 psi |
| | TEMPERATURE | min -10 °C 14 °F |
| | | max +60 °C 140 °F |

| Series | Actuation | Reactuation | Function | Size |
|--------|-----------|-------------|----------|------|
|--------|-----------|-------------|----------|------|

0 3 V

G

- G = Tappet
- R = Short Roller
- H = Lever
- Z = Long Roller

0

0 = Monostable spring return

3

3 = 3/2
5 = 5/2

N C

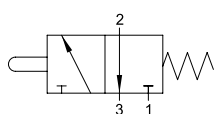
NC = Normally closed
00 = Function not provided

0 2

02 = 1/8

3/2

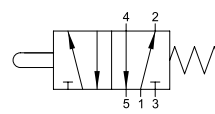
TAPPET - SPRING RETURN



| Part Number | Function | Size | Driving Force | Pack. |
|-----------------------|---------------|-------|---------------|-------|
| 03V G0 3 NC 02 | 3/2 NC | G 1/8 | 19.6 N | 1 |

5/2

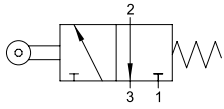
TAPPET - SPRING RETURN



| Part Number | Function | Size | Driving Force | Pack. |
|-----------------------|----------|-------|---------------|-------|
| 03V G0 5 00 02 | 5/2 | G 1/8 | 39.2 N | 1 |

3/2

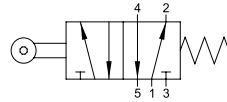
SHORT ROLLER - SPRING RETURN



| Part Number | Function | Size | Driving Force | Pack. |
|-----------------------|---------------|-------|---------------|-------|
| 03V R0 3 NC 02 | 3/2 NC | G 1/8 | 9.8 N | 1 |

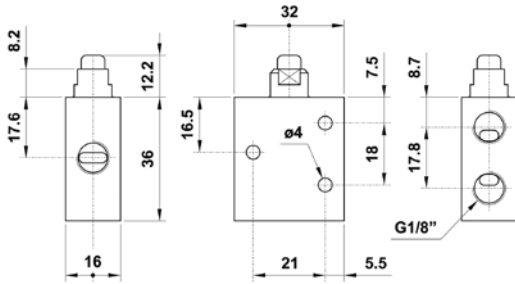
5/2

SHORT ROLLER - SPRING RETURN

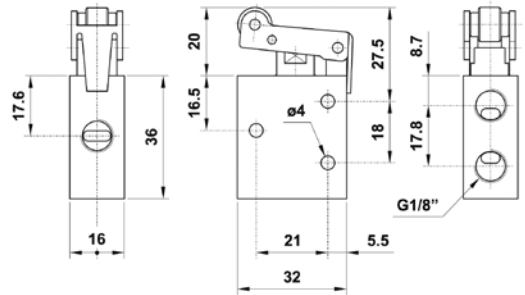


| Part Number | Function | Size | Driving Force | Pack. |
|-----------------------|----------|-------|---------------|-------|
| 03V R0 5 00 02 | 5/2 | G 1/8 | 21.5 N | 1 |

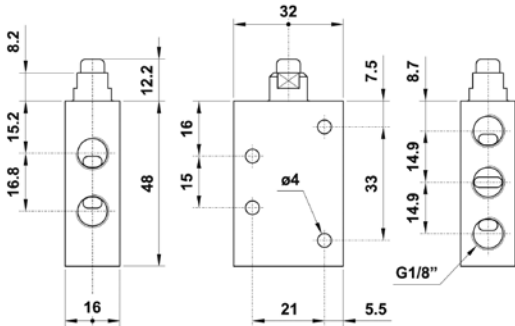
03V G0 3 NC 02



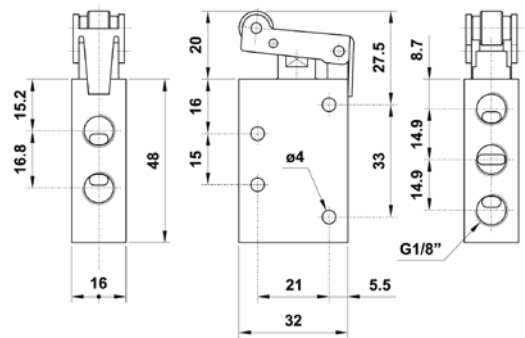
03V R0 3 NC 02



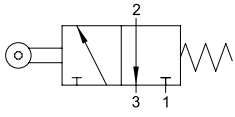
03V G0 5 00 02



03V R0 5 00 02

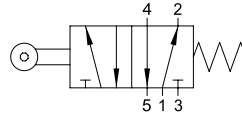


3/2
LONG ROLLER - SPRING RETURN



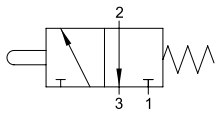
| Part Number | Function | Size | Driving Force | Pack. |
|-----------------------|---------------|-------|---------------|-------|
| 03V Z0 3 NC 02 | 3/2 NC | G 1/8 | 8.3 N | 1 |

5/2
LONG ROLLER - SPRING RETURN



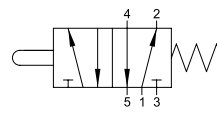
| Part Number | Function | Size | Driving Force | Pack. |
|-----------------------|----------|-------|---------------|-------|
| 03V Z0 5 00 02 | 5/2 | G 1/8 | 14.2 N | 1 |

3/2
LEVER OPERATED - SPRING RETURN



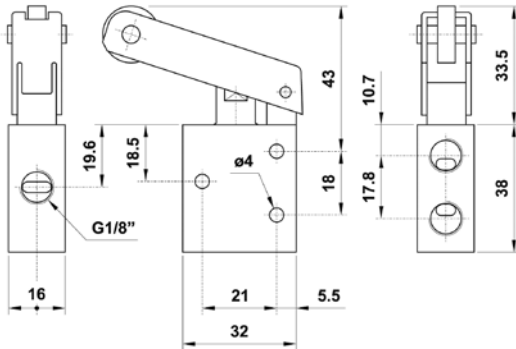
| Part Number | Function | Size | Driving Force | Pack. |
|-----------------------|---------------|-------|---------------|-------|
| 03V H0 3 NC 02 | 3/2 NC | G 1/8 | 7.8 N | 1 |

5/2
LEVER OPERATED - SPRING RETURN

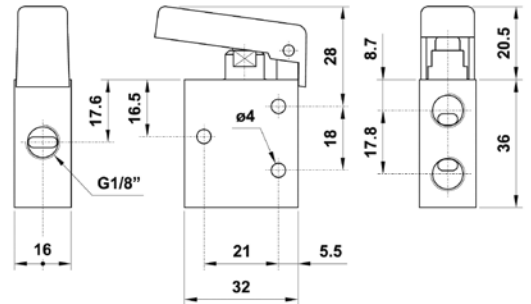


| Part Number | Function | Size | Driving Force | Pack. |
|-----------------------|----------|-------|---------------|-------|
| 03V H0 5 00 02 | 5/2 | G 1/8 | 13.7 N | 1 |

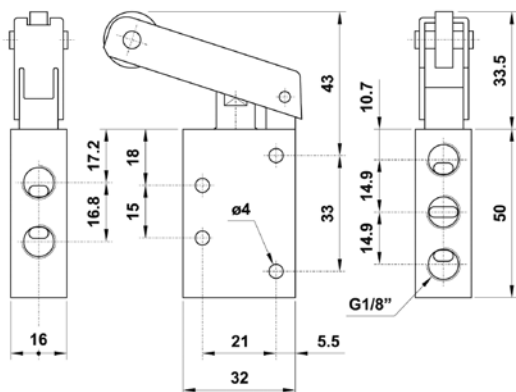
03V Z0 3 NC 02



03V H0 3 NC 02



03V Z0 5 00 02



03V H0 5 00 02

