



18 MM SOLENOID PILOT VALVES - VDMA

TECHNICAL CHARACTERISTICS



Reference Standard

- 1907/2006 REACH ✓
- 2011/65/CE RoHS ✓
- PED 2014/68/UE
- ISO 15407-1 VDMA 24563 SIZE 02 (18 mm)

Component Parts and Materials

- Anodised aluminium body
- Nickel-plated spool
- NBR seals

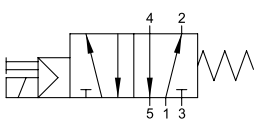
	6 bar FLOW RATE with Δp 1 bar		550 NI/min
	OPERATING PRESSURE	Monostable	2.5 ÷ 10 bar 36.5 ÷ 145 psi
		Bistable	1 ÷ 10 bar 14.5 ÷ 145 psi
	TEMPERATURE	min	-10 °C 14 °F
		max	+60 °C 140 °F
	SOLENOID VOLTAGE		24V DC ÷ 24V AC
	MINIMUM POWER		2W - 3VA
	MANUAL CONTROL		MONOSTABLE
	Response time	Monostable	TRA = 13 ms TRR = 26 ms
		Bistable	TRA=TRR = 24 ms

TRA = Response time with energised coil

TRR = Response time with deenergised coil

Series	Actuation	Reactuation	Function	Size
0 5 V	S S = Solenoid	0 0 = Monostable spring return 1 = Bistable	7 3 = 3/2 5 = 5/2 7 = 5/3	CC CC = All Ports Blocked OC = Normally exhausted 00 = Function not provided
				0 0 00 = 24V DC 01 = 24V AC

5/2
SINGLE SOLENOID PILOT - SPRING RETURN

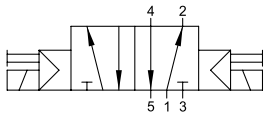


Part Number	Function	Solenoid	Pack.
05V S0 5 00 00	5/2	24V DC	1
05V S0 5 00 01	5/2	24V 50/60Hz	1



5/2

DOUBLE SOLENOID PILOT

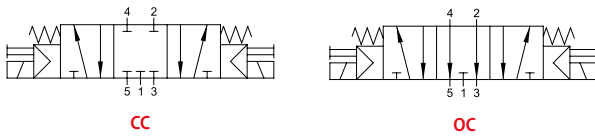


Part Number	Function	Solenoid	Pack.
05V S1 5 00 00	5/2	24V DC	1
05V S1 5 00 01	5/2	24V 50/60Hz	1



5/3

DOUBLE SOLENOID PILOT - SPRING CENTERED

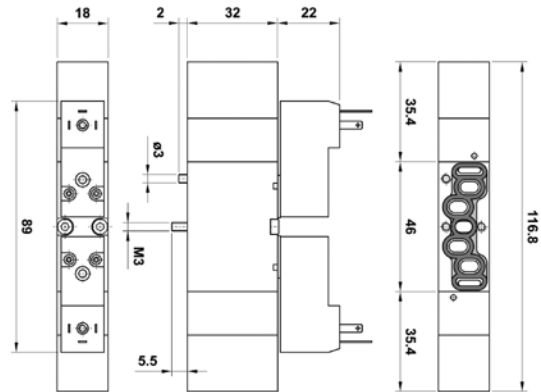
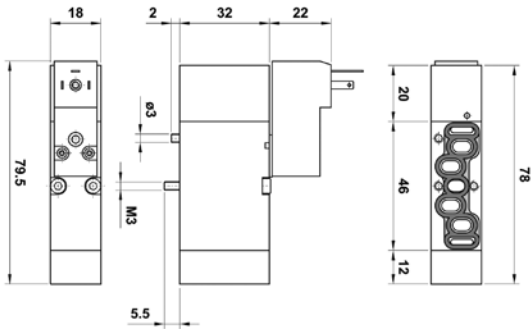


Part Number	Function	Solenoid	Pack.
05V S0 7 CC 00	5/3 CC	24V DC	1
05V S0 7 OC 00	5/3 OC	24V DC	1
05V S0 7 CC 01	5/3 CC	24V 50/60Hz	1
05V S0 7 OC 01	5/3 OC	24V 50/60Hz	1

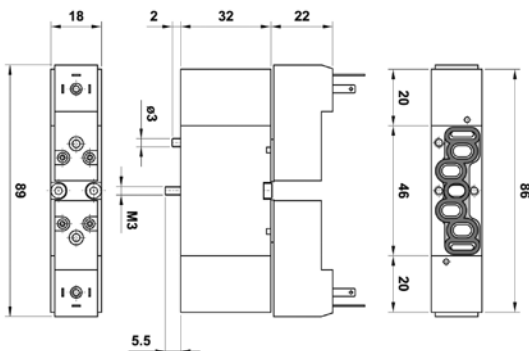


05V S0 5 00 00 05V S0 5 00 01

05V S0 7 CC 00 05V S0 7 OC 00 05V S0 7 CC 01 05V S0 7 OC 01



05V S1 5 00 00 05V S1 5 00 01



18 MM AIR PILOT VALVES



TECHNICAL CHARACTERISTICS



Reference Standard

- 1907/2006
REACH ✓
- 2011/65/CE
RoHS ✓
- PED
2014/68/UE
- ISO 15407-1
VDMA 24563 SIZE 02 (18 mm)



Component Parts and Materials

- Anodised aluminium body
- Nickel-plated spool
- NBR seals

	6 bar FLOW RATE with Δp 1 bar	550 NI/min
	PRESSURE DRIVE	0 ÷ 10 bar 0 ÷ 145 psi
	OPERATING PRESSURE	Monostable 2 ÷ 10 bar 29 ÷ 145 psi
		Bistable 1 ÷ 10 bar 14.5 ÷ 145 psi
	TEMPERATURE	min -10 °C 14 °F
		max +60 °C 140 °F
	RESPONSE TIME	Monostable TRA = 12 ms
		Bistable TRR = 24 ms
		TRA=TRR = 21 ms

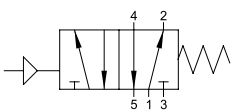
TRA = Response time with energised coil

TRR = Response time with deenergised coil

Series	Actuation	Reactuation	Function	Size
0 5 V	P P = Pneumatic	0 0 = Monostable spring return 1 = Bistable	5 5 = 5/2 7 = 5/3	0 0 CC = All Ports Blocked OC = Normally exhausted 00 = Function not provided

5/2

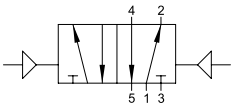
SINGLE AIR PILOT - SPRING RETURN



Part Number	Function	Pack.
05V P0 5 00 00	5/2	1

5/2

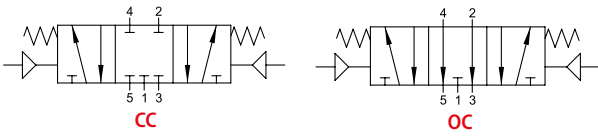
DOUBLE AIR PILOT



Part Number	Function	Pack.
05V P1 5 00 00	5/2	1

5/3

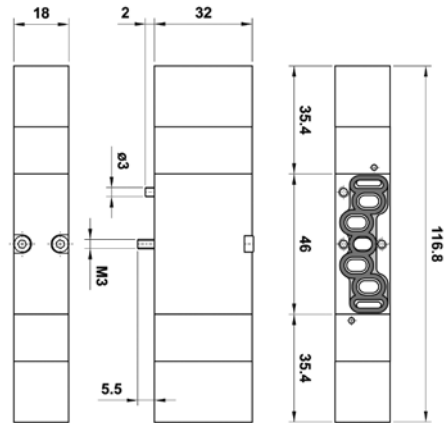
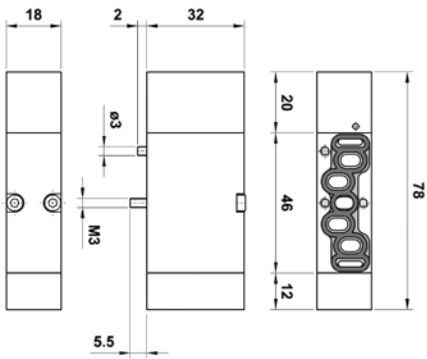
DOUBLE AIR PILOT - SPRING CENTERED



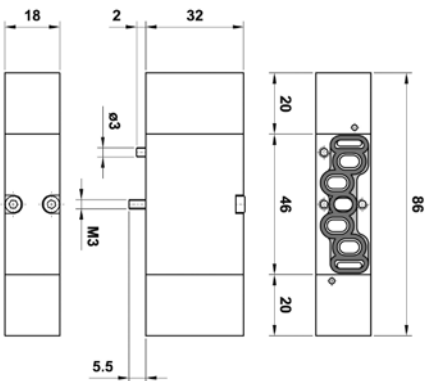
Part Number	Function	Pack.
05V P0 7 CC 00	5/3 CC	1
05V P0 7 OC 00	5/3 OC	1

05V P0 5 00 00

05V P0 7 CC 00 05V P0 7 OC 00



05V P1 5 00 00



MODULAR BASES AND ACCESSORIES

All the bases are supplied with screws and seals to secure the correct assembly.

FRONT MANIFOLD END PLATE



Part Number	Pack.
05V B1 0 00 00	1

REAR MANIFOLD END PLATE



Part Number	Pack.
05V B2 0 00 00	1

MODULAR BASE



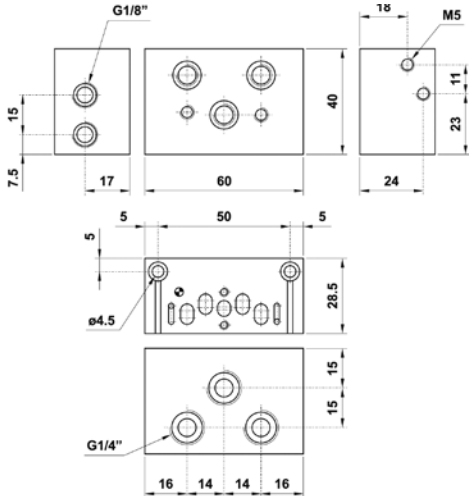
Part Number	Pack.
05V B3 0 00 00	1

INTERMEDIATE PRESSURE BASE

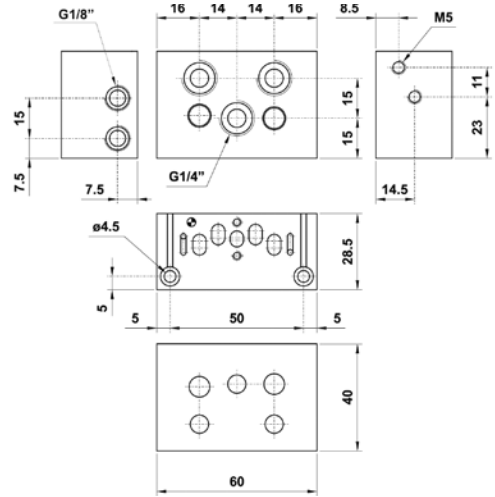


Part Number	Pack.
05V B4 0 00 00	1

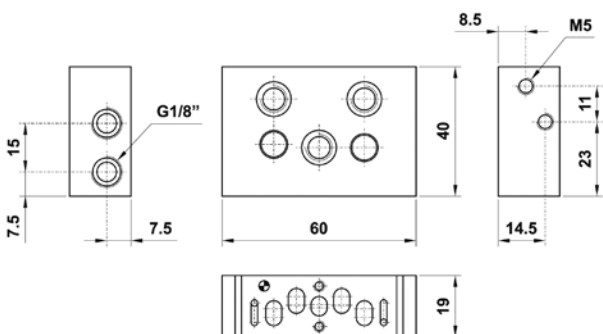
05V B1 0 00 00



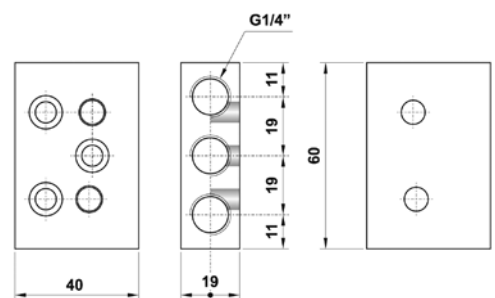
05V B2 0 00 00



05V B3 0 00 00



05V B4 0 00 00



INTERMEDIATE PLUG



Part Number	Pack.
05V B8 0 00 00	1

GASKET FOR INTERMEDIATE PLUG



The gasket is supplied with M8 dowel.

Part Number	Pack.
05V B7 0 00 00	1

BLANKING PLATE



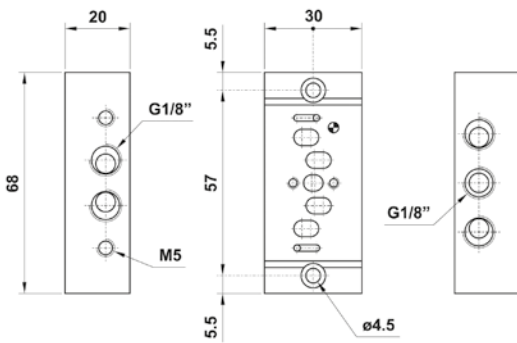
Part Number	Pack.
05V B9 0 00 00	1

INDIVIDUAL BASE

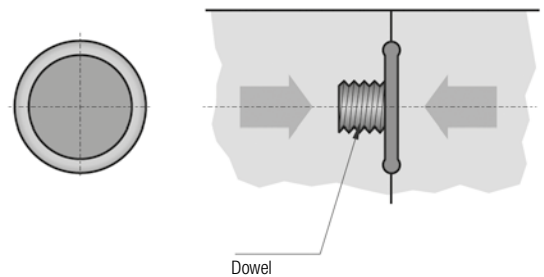


Part Number	Pack.
05V B5 0 00 00	1

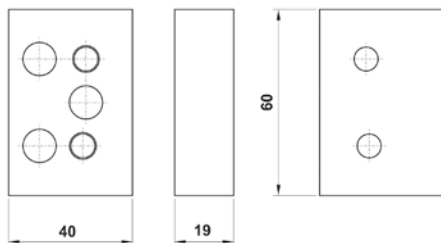
05V B5 0 00 00



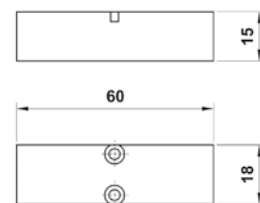
05V B7 0 00 00



05V B8 0 00 00



05V B9 0 00 00



Example of assembling

