

PEDAL VALVES

A90



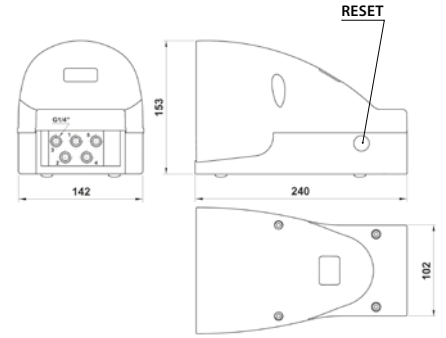


Reference Standard

1907/2006
REACH ✓

2011/65/CE
RoHS ✓

PED
2014/68/UE



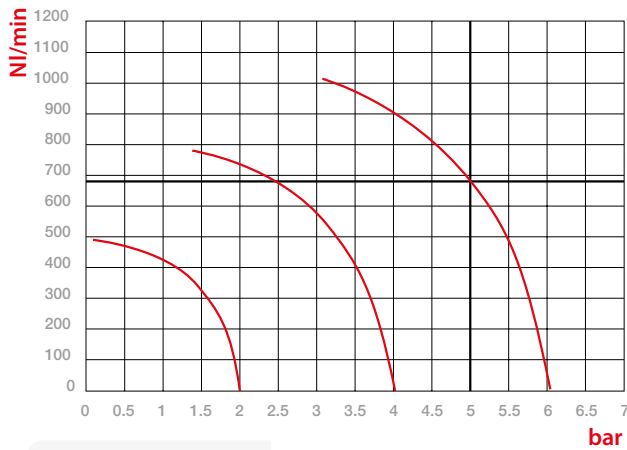
Functions

5/2
SUPPLY = ①
OUTPUT = ② ④
EXHAUST = ③ ⑤

3/2
SUPPLY = ①
OUTPUT = ② ~~④~~
EXHAUST = ③ ⑤



Flow Rates

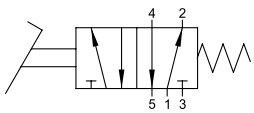


NI/min **bar**
Flow Pressures

		1/4
	THREADED	G 1/4
	OPERATING PRESSURE	2 ÷ 10 bar 29 ÷ 145 psi
	TEMPERATURE	max +60 °C 140 °F
	PROTECTION	TECHNOPOLYMER

5/2

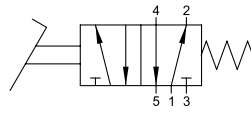
PEDAL WITH PROTECTION COVER - SPRING RETURN



Part Number	Function	Size	Pack.
06V 00 0 00 01	5/2	G 1/4	1

5/2

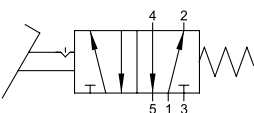
PEDAL WITH PROTECTION COVER AND SAFETY FEATURE - SPRING RETURN



Part Number	Function	Size	Pack.
06V 00 0 00 02	5/2	G 1/4	1

5/2

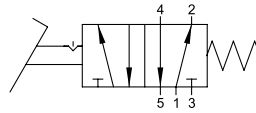
PEDAL WITH PROTECTION COVER DETENT - SPRING RETURN



Part Number	Function	Size	Pack.
06V 00 0 00 03	5/2	G 1/4	1

5/2

PEDAL WITH DETENT AND SAFETY LOCK - SPRING RETURN



Part Number	Function	Size	Pack.
06V 00 0 00 04	5/2	G 1/4	1