



**SOLENOID PILOT VALVES**

**TECHNICAL CHARACTERISTICS**



**Reference Standard**

1907/2006 REACH ✓  
 2011/65/CE RoHS ✓  
 PED 2014/68/UE  
 ATEX 2014/34/UE  
**VDI/VDE 3845**



**Component Parts and Materials**

- Anodised and painted aluminium body
- Chemical nickel-plated spool
- NBR seals

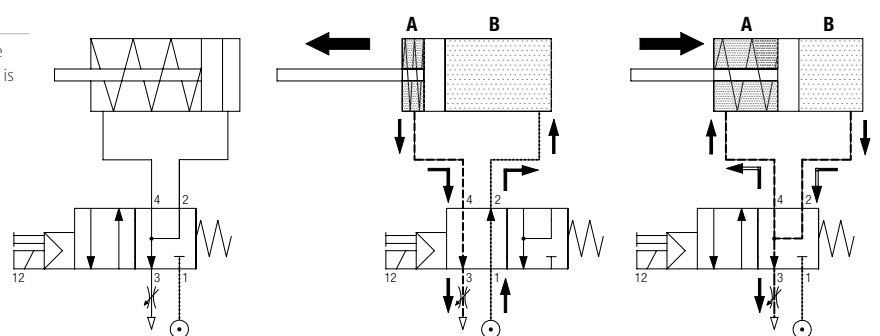
		1/4
	THREADED	G 1/4 - NPTF 1/4
	6 bar FLOW RATE with Δp 1 bar	1200 NI/min
	OPERATING PRESSURE	Monostable 2 ÷ 10 bar 29 ÷ 145 psi
		Bistable 1 ÷ 10 bar 14.5 ÷ 145 psi
	TEMPERATURE	min -10 °C 14 °F
		max +60 °C 140 °F
	SOLENOID VOLTAGE	24V DC - 12V DC - 24V AC 110V AC - 220V AC
	MINIMUM POWER	2W - 3VA
	MANUAL CONTROL	BISTABLE
	TORQUE OF TIGHTENING THE NUT SOLENOID	0.6 Nm

Series	Actuation	Reactuation	Function	Size	Thread	
<b>0 8 V</b>	<b>S</b> S = Solenoid	<b>0</b> 0 = Monostable spring return 1 = Bistable	<b>4</b> 4 = 4/2 5 = 5/2	<b>NC</b> NC = Normally closed 00 = Function not provided	<b>0 3</b> 03 = 1/4	 = G N = NPTF



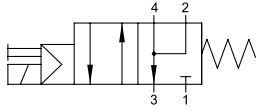
**Schematic diagram of the valve NAMUR 4/2**

To prevent the return phase of the external dirty air enters the chamber in the cylinder, the air escaping from the chamber B is routed to the same room.



**4/2**

**SINGLE SOLENOID PILOT - SPRING RETURN**

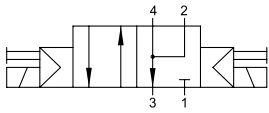


Part Number	Function	Size	Pack.
<b>08V S0 4 NC 03</b>	4/2 <b>NC</b>	G 1/4	1

Part Number	Function	Size	Pack.
<b>08V S0 4 NC 03 N</b>	4/2 <b>NC</b>	NPTF 1/4	1

**4/2**

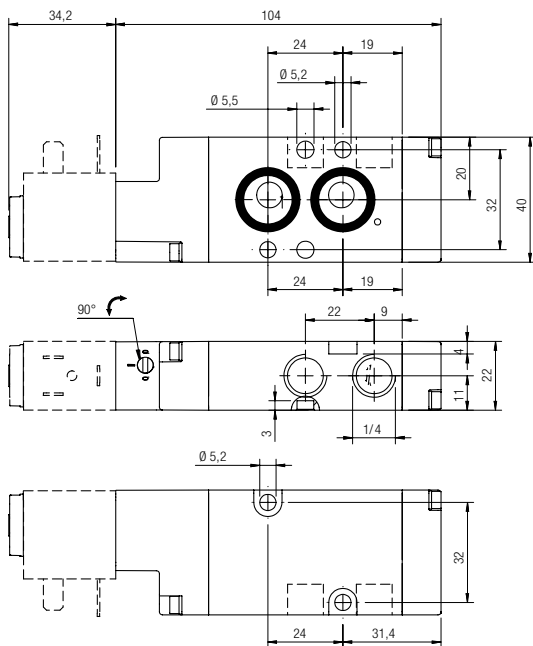
**DOUBLE SOLENOID PILOT**



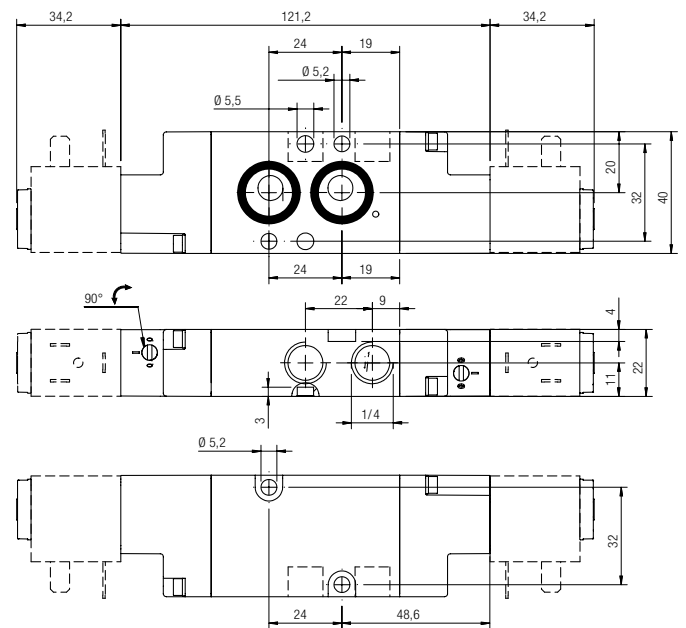
Part Number	Function	Size	Pack.
<b>08V S1 4 00 03</b>	4/2	G 1/4	1

Part Number	Function	Size	Pack.
<b>08V S1 4 00 03 N</b>	4/2	NPTF 1/4	1

**08V S0 4 NC 03 08V S0 4 NC 03 N**

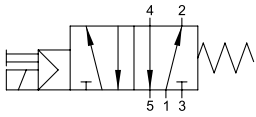


**08V S1 4 00 03 08V S1 4 00 03 N**



**5/2**

**SINGLE SOLENOID PILOT - SPRING RETURN**

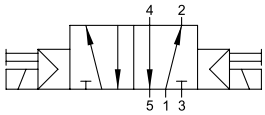


Part Number	Function	Size	Pack.
<b>08V S0 5 00 03</b>	5/2	G 1/4	1

Part Number	Function	Size	Pack.
<b>08V S0 5 00 03 N</b>	5/2	NPTF 1/4	1

**5/2**

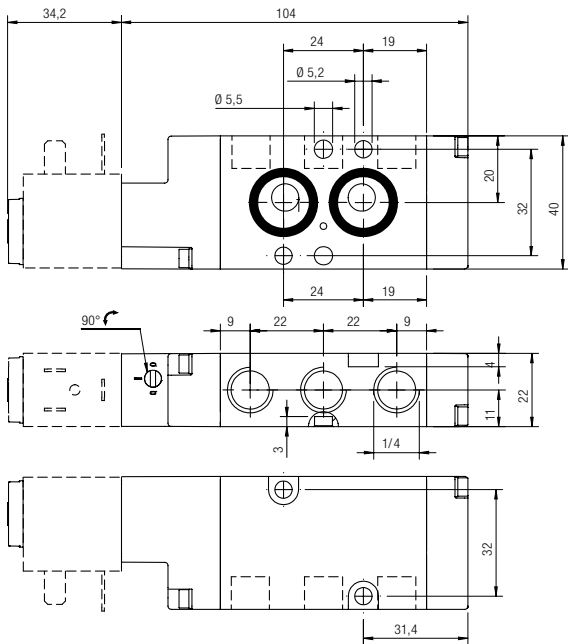
**DOUBLE SOLENOID PILOT**



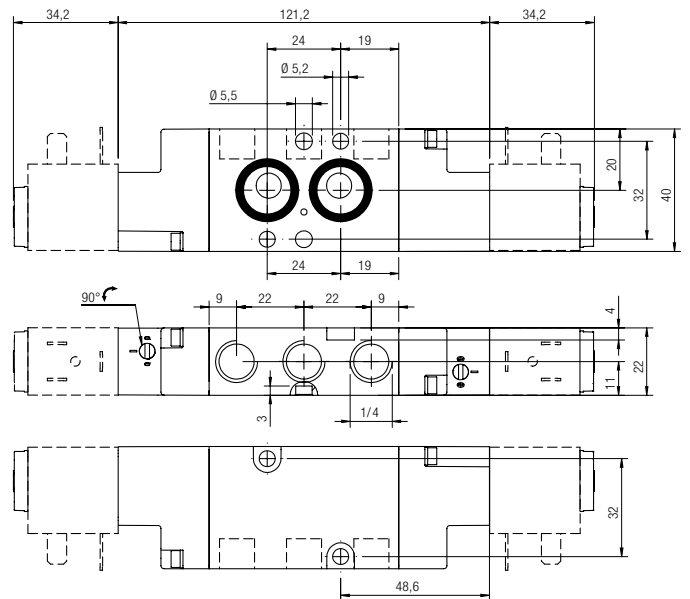
Part Number	Function	Size	Pack.
<b>08V S1 5 00 03</b>	5/2	G 1/4	1

Part Number	Function	Size	Pack.
<b>08V S1 5 00 03 N</b>	5/2	NPTF 1/4	1

**08V S0 5 00 03 08V S0 5 00 03 N**



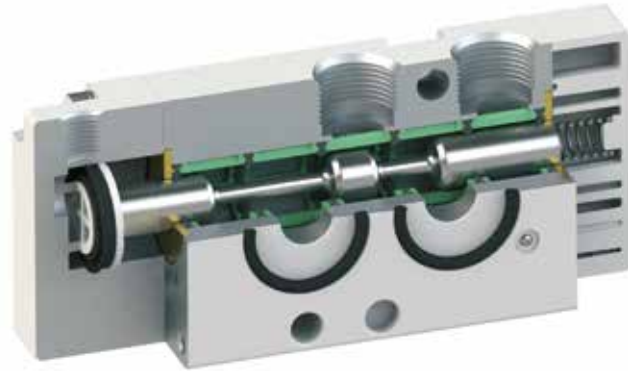
**08V S1 5 00 03 08V S1 5 00 03 N**



**AIR PILOT VALVES**



**TECHNICAL CHARACTERISTICS**



**Reference Standard**

1907/2006 REACH ✓    2011/65/CE RoHS ✓    PED 2014/68/UE    ATEX 2014/34/UE

**VDI/VDE 3845**



**Component Parts and Materials**

- Anodised and painted aluminium body
- Chemical nickel-plated spool
- NBR seals

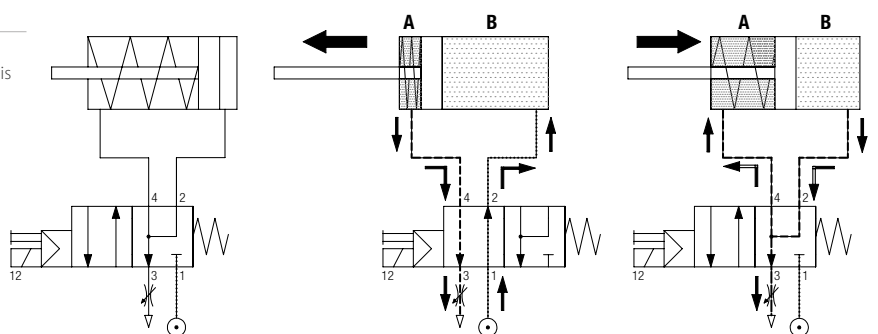
		1/4
	THREADED	G 1/4 - NPTF 1/4
	6 bar FLOW RATE with Δp 1 bar	1200 NI/min
	OPERATING PRESSURE	0 ÷ 10 bar 0 ÷ 145 psi
	PRESSURE DRIVE	Monostable 2 ÷ 10 bar 29 ÷ 145 psi
		Bistable 1 ÷ 10 bar 14.5 ÷ 145 psi
	TEMPERATURE	min -10 °C 14 °F
		max +60 °C 140 °F

Series	Actuation	Reactuation	Function	Size	Thread	
<b>0 8 V</b>	<b>P</b> P = Pneumatic	<b>0</b> 0 = Monostable spring return 1 = Bistable	<b>4</b> 4 = 4/2 5 = 5/2	<b>NC</b> NC = Normally closed 00 = Function not provided	<b>0 3</b> 03 = 1/4	 = G N = NPTF



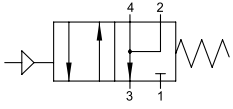
**Schematic diagram of the valve NAMUR 4 / 2**

To prevent the return phase of the external dirty air enters the chamber in the cylinder, the air escaping from the chamber B is routed to the same room.



**4/2**

**SINGLE AIR PILOT - SPRING RETURN**

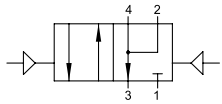


Part Number	Function	Size	Pack.
<b>08V P0 4 NC 03</b>	4/2 <b>NC</b>	G 1/4	1

Part Number	Function	Size	Pack.
<b>08V P0 4 NC 03 N</b>	4/2 <b>NC</b>	NPTF 1/4	1

**4/2**

**DOUBLE AIR PILOT**

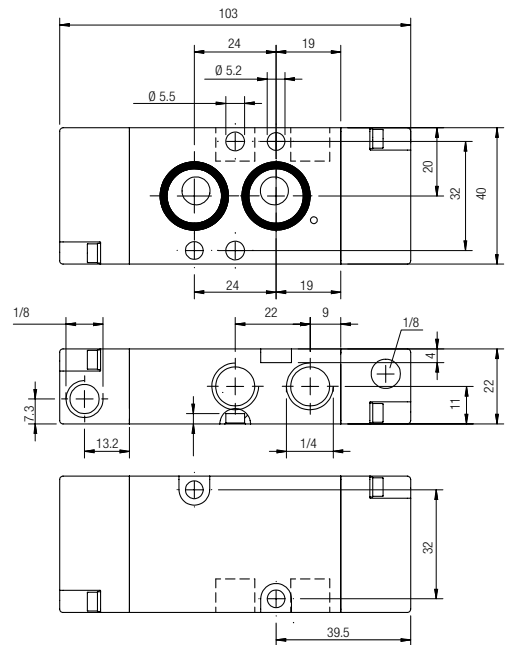
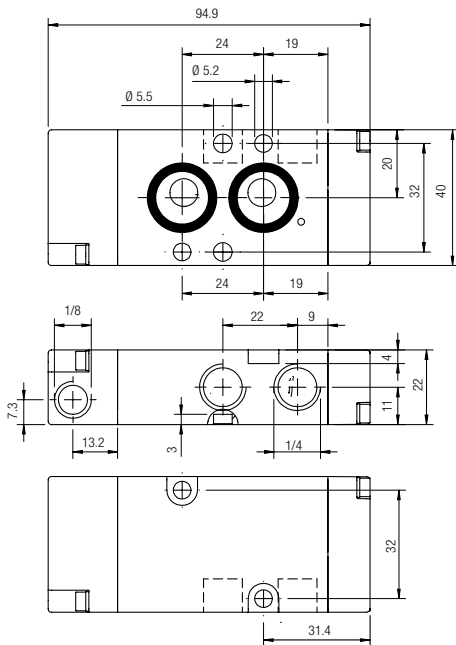


Part Number	Function	Size	Pack.
<b>08V P1 4 00 03</b>	4/2	G 1/4	1

Part Number	Function	Size	Pack.
<b>08V P1 4 00 03 N</b>	4/2	NPTF 1/4	1

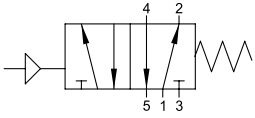
**08V P0 4 NC 03 08V P0 4 NC 03 N**

**08V P1 4 00 03 08V P1 4 00 03 N**



**5/2**

**SINGLE AIR PILOT - SPRING RETURN**

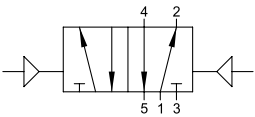


Part Number	Function	Size	Pack.
<b>08V P0 5 00 03</b>	5/2	G 1/4	1

Part Number	Function	Size	Pack.
<b>08V P0 5 00 03 N</b>	5/2	NPTF 1/4	1

**5/2**

**DOUBLE AIR PILOT**



Part Number	Function	Size	Pack.
<b>08V P1 5 00 03</b>	5/2	G 1/4	1

Part Number	Function	Size	Pack.
<b>08V P1 5 00 03 N</b>	5/2	NPTF 1/4	1

**08V P0 5 00 03 08V P0 5 00 03 N**

**08V P1 5 00 03 08V P1 5 00 03 N**

