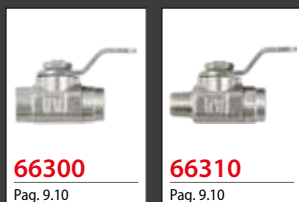


Ball Valves



Stainless Steel Ball Valves



CHROME PLATED BRASS BALL VALVES



Ball Valves



TECHNICAL CHARACTERISTICS



Reference Standard

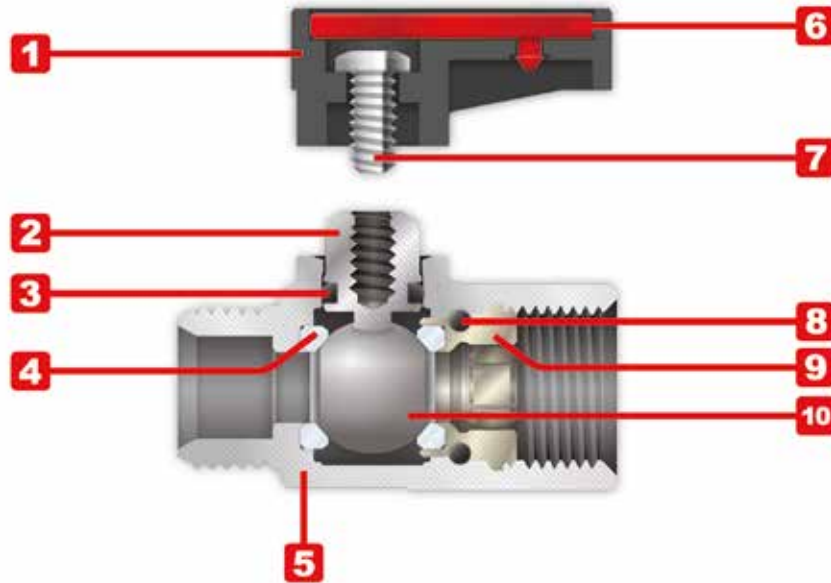
1907/2006
REACH ✓

2011/65/CE
RoHS ✓

PED
2014/68/UE

BS EN
331:2015

SILICON
FREE



Pressure Rating

Vacuum ~ 250 PSI
-0.99 bar ~ 20 bar
-0.099 MPa ~ 2.0 MPa



Temperatures

NBR	EPDM	FKM
-4° F ~ 176° F	-40° F - 266° F	5° F - 266° C
-20° C ~ 80° C	-40° C - 130° C	-15° C - 130° C



Component Parts and Materials

- 1 PA66 Glass Reinforced Handle
- 2 Chrome Nickel Plated Brass Spindle
- 3 NBR O-Ring Seal
- 4 PTFE Seats
- 5 Chrome Nickel Plated Brass Body
- 6 Acetalic Resin Plate
- 7 Steel Screw
- 8 NBR O-Ring Seal
- 9 Brass Fitting
- 10 Chrome Nickel Plated Brass Ball



Media

- Compressed air
- Water
- Oils
- Rated for gases, consult factory for details



Threads

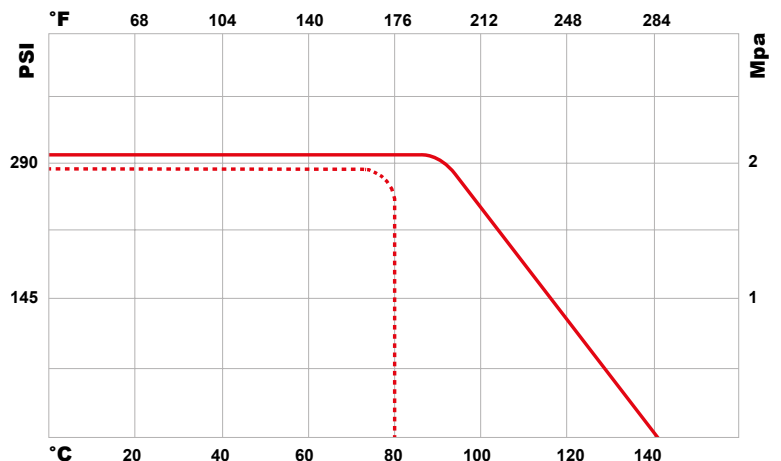
Gas in conformity with ISO7.1, BS 21, DIN 2999.
Parallel gas in conformity with ISO 228 Class A.



PRESSURE - TEMPERATURE RATINGS DIAGRAM

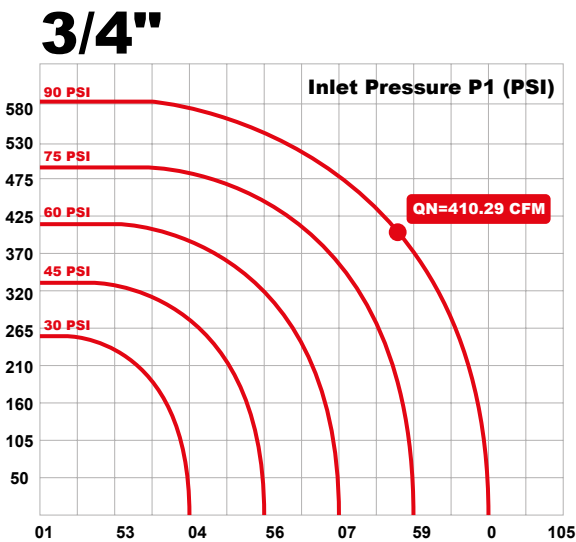
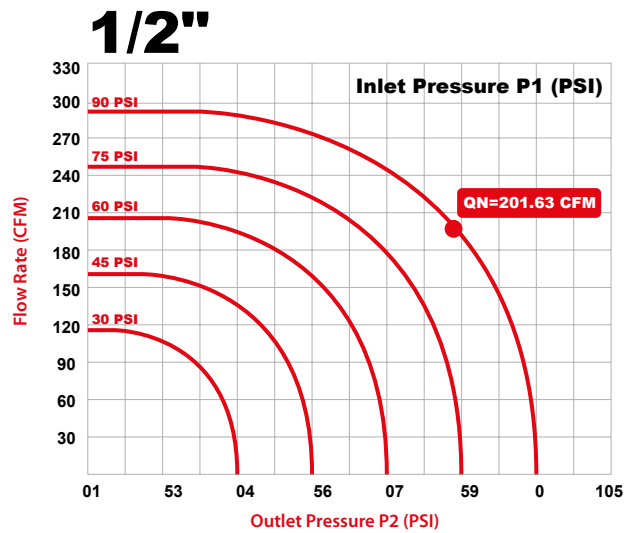
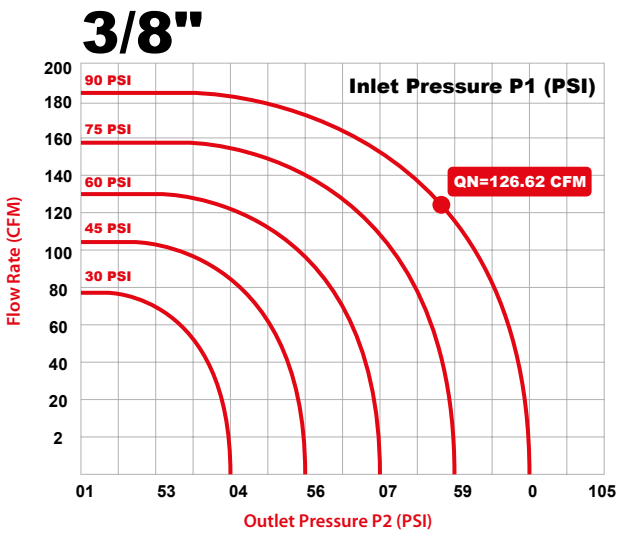
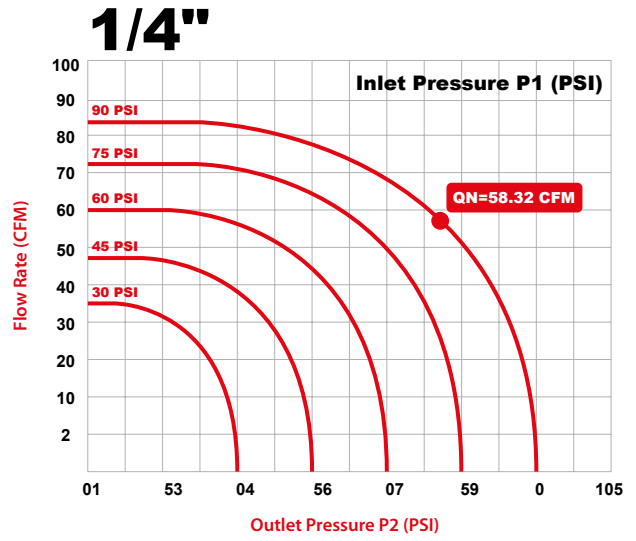
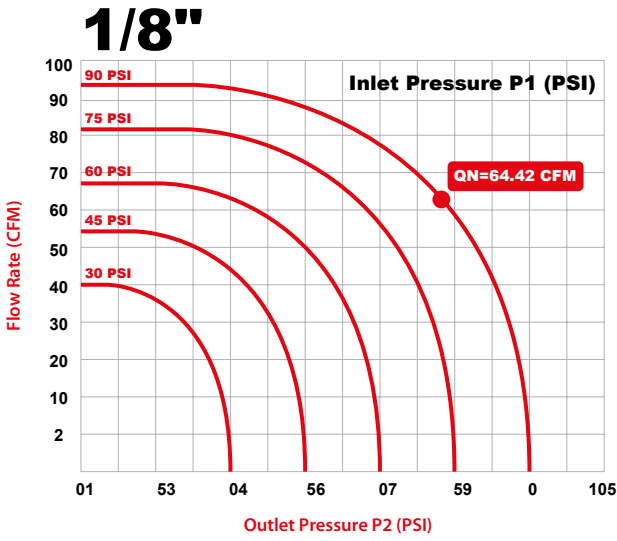
PTFE + FKM

PTFE + NBR





BALL VALVES SPECIFICATIONS





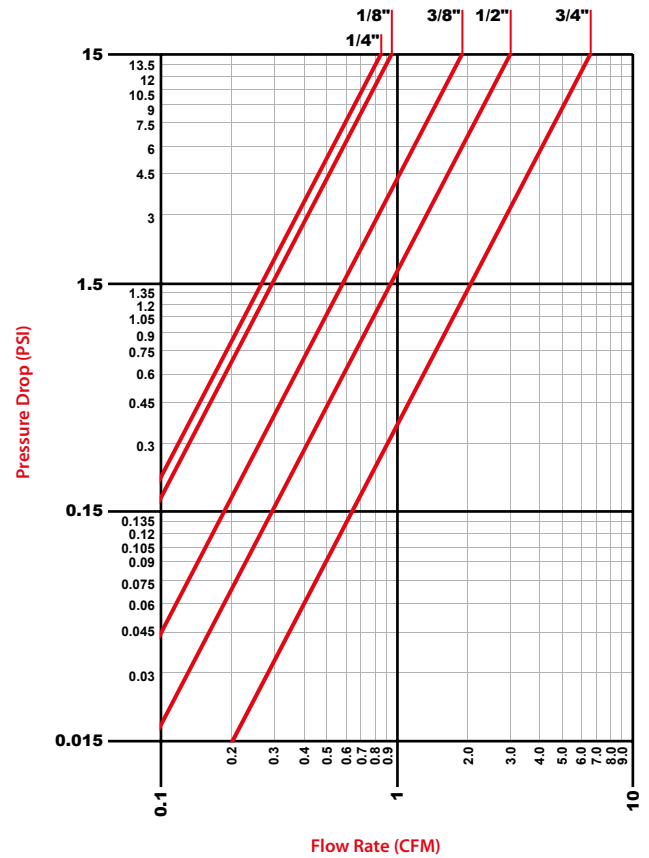
BALL VALVES SPECIFICATIONS



Flow Rate & Pressure Drop

In the table below, we specify the flow rate factors of our ball valves. These factors represent the amount of air and water that flows through the valve. They are measured by Cubic Feet per Minute at 60° F.

Thread Size	Factors of flow rate	
	CFM	m ³ /h
1/8"	0.95	1.6
1/4"	0.86	1.4
3/8"	1.86	3.1
1/2"	2.97	5
3/4"	6.05	10.2



Option

PART NUMBER	SIZE	COLOR	TYPE OF THE SEAL	TYPE OF HANDLE
-------------	------	-------	------------------	----------------

86300

3/8-3/8

RED PLATE

NBR



Blue Plate
BL

NBR



Standard Short Handle for Valve 1/8-1/4-3/8-1/2
Standard Long Handle for Valve 3/4

If required



Red Plate

RO



Green Plate

VE



White Plate

BN



Yellow Plate

GI

GAS:



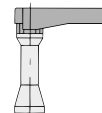
Yellow Plate EN 331

GI

**FKM
HNBR
EPDM**



LONG Handle

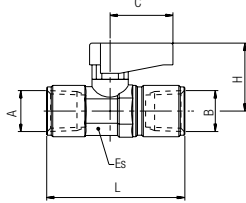


Long Handle with Spindle Extension

86300

FEMALE X FEMALE

NPTF

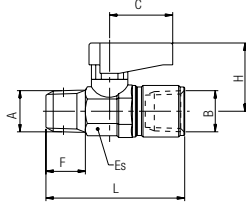


Part No.	A NPTF	B NPTF	DN	ES	L	C	H
86300-02	1/8	1/8	.217 (5,5)	.551 (14) - .591 (15)	1.476 (37,5)	.748 (19)	.827 (21)
86300-04	1/4	1/4	.217 (5,5)	.551 (14) - .591 (15)	1.811 (46)	.748 (19)	.827 (21)
86300-06	3/8	3/8	.315 (8)	.709 (18) - .748 (19)	1.909 (48,5)	.748 (19)	.866 (22)
86300-08	1/2	1/2	.394 (10)	.866 (22) - .906 (23)	2.441 (62)	1.024 (26)	1.201 (30,5)

86310

MALE X FEMALE

NPTF

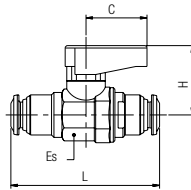


Part No.	A NPTF	B NPTF	DN	ES	F	L	C	H
86310-02	1/8	1/8	.217 (5,5)	.551 (14) - .591 (15)	.335 (8,5)	1.476 (37,5)	.748 (19)	.827 (21)
86310-04	1/4	1/4	.217 (5,5)	.551 (14) - .591 (15)	.512 (13)	1.811 (46)	.748 (19)	.827 (21)
86310-06	3/8	3/8	.315 (8)	.709 (18) - .748 (19)	.512 (13)	1.909 (48,5)	.748 (19)	.866 (22)
86310-08	1/2	1/2	.394 (10)	.866 (22) - .906 (23)	.669 (17)	2.441 (62)	1.024 (26)	1.201 (30,5)
86310-12	3/4	3/4	.551 (14)	1.102 (28) - 1.181 (30)	.689 (17,5)	2.500 (63,5)	1.953 (49,5)	1.319 (33,5)

86320

INCH TUBE X INCH TUBE

Inch tube

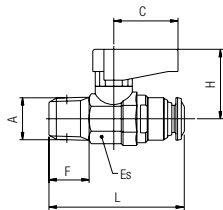


Part No.	Tube	Tube	ES	L	C	H
86320-02	1/8	1/8	.551 (14) - .591 (15)	1.673 (42,5)	.748 (19)	.828 (21)
86320-04	1/4	1/4	.551 (14) - .591 (15)	1.831 (46,5)	.748 (19)	.828 (21)
86320-06	3/8	3/8	.709 (18) - .748 (19)	2.382 (60,5)	.748 (19)	.866 (22)

86330

INCH TUBE X MALE

NPTF

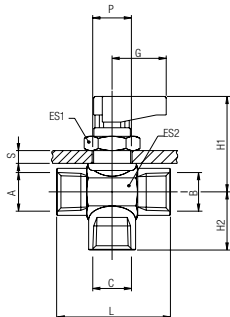


Part No.	Tube	A NPTF	F NPTF	ES	L	C	H
86330-53-02	5/32 (4)	1/8	.332 (8,5)	.551 (14) - .591 (15)	1.365 (35)	.741 (19)	.819 (21)
86330-04-02	1/4	1/8	.332 (8,5)	.551 (14) - .591 (15)	1.574 (40)	.741 (19)	.819 (21)
86330-04-04	1/4	1/4	.488 (12,5)	.551 (14) - .591 (15)	1.502 (38,5)	.741 (19)	.819 (21)
86330-06-06	3/8	3/8	.507 (13)	.709 (18) - .748 (19)	1.755 (45)	.741 (19)	.858 (22)

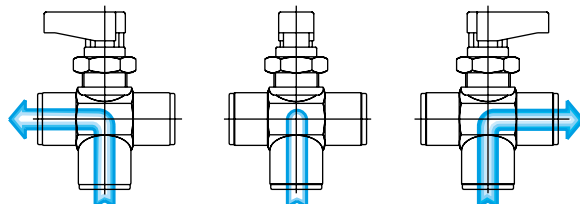
86700

THREE POSITION (CLOSED CENTER)

NPTF



Part No.	A/B/C	DN	ES1	ES2	L	G	H1	H2	S max
86700-02	1/8	.217 (5,5)	.669 (17)	.669 (17)	1.476 (37,5)	.748 (19)	1.319 (33,5)	.650 (16,5)	.177 (4,5)
86700-04	1/4	.217 (5,5)	.669 (17)	.669 (17)	1.476 (37,5)	.748 (19)	1.319 (33,5)	.650 (16,5)	.177 (4,5)
86700-06	3/8	.276 (7)	.669 (17)	.827 (21)	1.909 (48,5)	.748 (19)	1.378 (35)	.866 (22)	.177 (4,5)

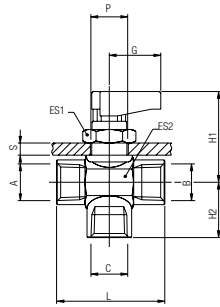


No Gas

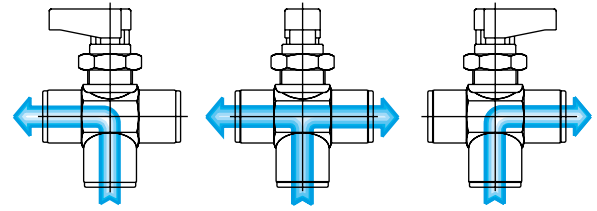
86710

THREE POSITION (OPEN CENTER)

NPTF



Part No.	A/B/C	DN	ES1	ES2	L	G	H1	H2	S max
86710-02	1/8	.217 (5,5)	.669 (17)	.669 (17)	1.476 (37,5)	.748 (19)	1.319 (33,5)	.650 (16,5)	.177 (4,5)
86710-04	1/4	.217 (5,5)	.669 (17)	.669 (17)	1.476 (37,5)	.748 (19)	1.319 (33,5)	.650 (16,5)	.177 (4,5)
86710-06	3/8	.276 (7)	.827 (21)	.827 (21)	1.909 (48,5)	.748 (19)	1.378 (35)	.866 (22)	.177 (4,5)

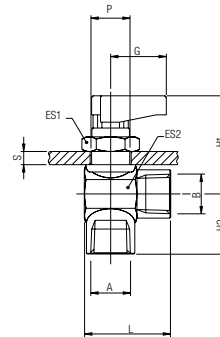


No Gas

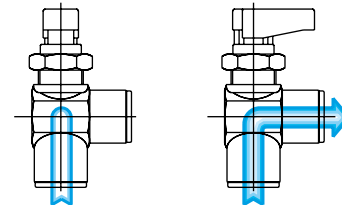
86720

RIGHT ANGLE

NPTF



Part No.	A/B	DN	ES1	ES2	L	G	H1	H2	S max
86720-02	1/8	.217 (5,5)	.669 (17)	.669 (17)	1.476 (37,5)	.748 (19)	1.319 (33,5)	.650 (16,5)	.177 (4,5)
86720-04	1/4	.217 (5,5)	.669 (17)	.669 (17)	1.476 (37,5)	.748 (19)	1.319 (33,5)	.650 (16,5)	.177 (4,5)
86720-06	3/8	.276 (7)	.669 (17)	.827 (21)	1.535 (39)	.748 (19)	1.378 (35)	.866 (22)	.177 (4,5)

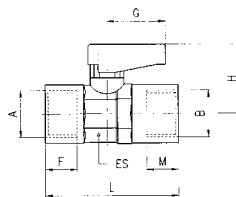


No Gas

6300

FEMALE X FEMALE

BSPT

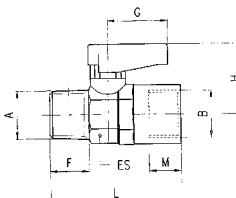


Part No.	A	B	DN	ES	F	M	L	G	H
6300-02	1/8	1/8	.217 (5,5)	.551(14) - .591(15)	.291 (7,4)	.291 (7,4)	1.417 (36)	.748 (19)	.827 (21)
6300-04	1/4	1/4	.217 (5,5)	.551(14) - .591(15)	.433 (11)	.433 (11)	1.693 (43)	.748 (19)	.827 (21)
6300-06	3/8	3/8	.315 (8)	.709(18) - .748(19)	.449 (11,4)	.449 (11,4)	1.850 (47)	.748 (19)	.866 (22)
6300-08	1/2	1/2	.394 (10)	.866(22) - .906(23)	.591 (15)	.591 (15)	2.323 (59)	1.024 (26)	1.201 (30,5)
6300-12	3/4	3/4	.551 (14)	1.102(28) - 1.181(30)	.642 (16,3)	.642 (16,3)	2.638 (67)	1.969 (50)	1.299 (33)

6310

MALE X FEMALE

BSPT

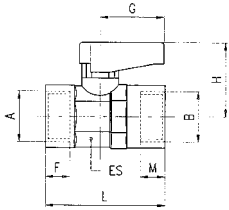


Part No.	A	B	DN	ES	F	M	L	G	H
6310-02	1/8	1/8	.217 (5,5)	.551(14) - .591(15)	.291 (7,4)	.291 (7,4)	1.417 (36)	.748 (19)	.827 (21)
6310-04-02	1/4	1/8	.217 (5,5)	.551(14) - .591(15)	.433 (11)	.291 (7,4)	1.594 (40,5)	.748 (19)	.827 (21)
6310-04	1/4	1/4	.217 (5,5)	.551(14) - .591(15)	.433 (11)	.433 (11)	1.693 (43)	.748 (19)	.827 (21)
6310-06	3/8	3/8	.315 (8)	.709(18) - .748(19)	.449 (11,4)	.449 (11,4)	1.811 (46)	.748 (19)	.866 (22)
6310-08	1/2	1/2	.394 (10)	.866(22) - .906(23)	.591 (15)	.591 (15)	2.244 (57)	1.024 (26)	1.201 (30,5)
6310-12	3/4	3/4	.551 (14)	1.102(28) - 1.181(30)	.642 (16,3)	.642 (16,3)	2.480 (63)	1.969 (50)	1.299 (33)

6400

FEMALE X FEMALE

G-THREAD

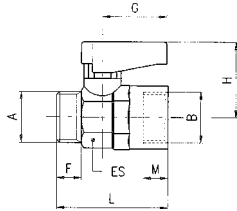


Part No.	A	B	DN	ES	F	M	L	G	H
6400-1/8	1/8	1/8	.217 (5,5)	.551(14) - .591(15)	.276 (7)	.276 (7)	1.378 (35)	.748 (19)	.827 (21)
6400-1/4	1/4	1/4	.217 (5,5)	.551(14) - .591(15)	.315 (8)	.315 (8)	1.457 (37)	.748 (19)	.827 (21)
6400-3/8	3/8	3/8	.315 (8)	.709(18) - .748(19)	.354 (9)	.354 (9)	1.654 (42)	.748 (19)	.866 (22)
6400-1/2	1/2	1/2	.394 (10)	.866(22) - .906(23)	.394 (10)	.394 (10)	1.929 (49)	1.024 (26)	1.201 (30,5)
6400-3/4	3/4	3/4	.551 (14)	1.102(28) - 1.181(30)	.472 (12)	.472 (12)	2.283 (58)	1.969 (50)	1.299 (33)

6410

MALE X FEMALE

G-THREAD

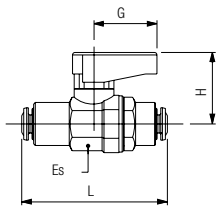


Part No.	A	B	DN	ES	F	M	L	G	H
6410-1/8-1/8	1/8	1/8	.217 (5,5)	.551(14) - .591(15)	.276 (7)	.276 (7)	1.339 (34)	.748 (19)	.827 (21)
6410-1/4-1/8	1/4	1/8	.217 (5,5)	.551(14) - .591(15)	.315 (8)	.276 (7)	1.378 (35)	.748 (19)	.827 (21)
6410-1/4-1/4	1/4	1/4	.217 (5,5)	.551(14) - .591(15)	.315 (8)	.315 (8)	1.378 (35)	.748 (19)	.827 (21)
6410-3/8-3/8	3/8	3/8	.315 (8)	.709(18) - .748(19)	.354 (9)	.354 (9)	1.535 (39)	.748 (19)	.866 (22)
6410-1/2-1/2	1/2	1/2	.394 (10)	.866(22) - .906(23)	.394 (10)	.394 (10)	1.772 (45)	1.024 (26)	1.201 (30,5)
6410-3/4-3/4	3/4	3/4	.551 (14)	1.102(28) - 1.181(30)	.472 (12)	.472 (12)	2.047 (52)	1.969 (50)	1.299 (33)

6560

TUBE X TUBE

Metric tube



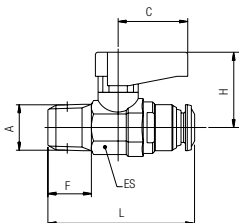
Part No.	Tube	Tube	DN	ES	L	G	H
6560-4	5/32 (4)	5/32 (4)	.118 (3)	.551(14) - .591(15)	1.732 (44)	.748 (19)	.827 (21)
6560-6	6	6	.197 (5)	.551(14) - .591(15)	1.890 (48)	.748 (19)	.827 (21)
6560-8	5/16 (8)	5/16 (8)	.217 (5,5)	.551(14) - .591(15)	1.890 (48)	.748 (19)	.827 (21)
6560-10	10	10	.315 (8)	.709(18) - .748(19)	2.303 (58,5)	.748 (19)	.866 (22)
6560-12	12	12	.394 (10)	.866(22) - .906(23)	2.598 (66)	1.024 (26)	1.201 (30,5)

No Gas

6570

TUBE X MALE

Metric tube - BSPT



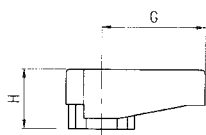
Part No.	A	Tube	DN	F	ES	L	C	H
6570-4-1/8	1/8	5/32 (4)	.118 (3)	.335 (8,5)	.551(14) - .591(15)	1.378 (35)	.748 (19)	.827 (21)
6570-6-1/8	1/8	6	.197 (5)	.335 (8,5)	.551(14) - .591(15)	1.575 (40)	.748 (19)	.827 (21)
6570-8-1/8	1/8	5/16 (8)	.217 (5,5)	.335 (8,5)	.551(14) - .591(15)	1.634 (41,5)	.748 (19)	.827 (21)
6570-6-1/4	1/4	6	.315 (8)	.492 (12,5)	.551(14) - .591(15)	1.516 (38,5)	.748 (19)	.827 (21)
6570-8-1/4	1/4	8	.394 (10)	.492 (12,5)	.551(14) - .591(15)	1.791 (45,5)	.748 (19)	.866 (22)

No Gas

BALL VALVE ACCESSORIES

86900

SHORT HANDLE

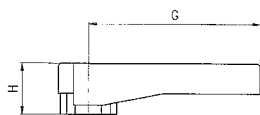


Part No.	C	H	Size Valve
* 86900-02	.748 (19)	.433 (11)	1/8 - 1/4 - 3/8
86900-08	1.024 (26)	.590 (15)	1/2 - 3/4

* Standard

86910

LONG HANDLE

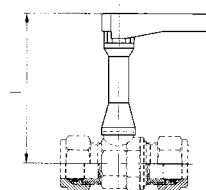


Part No.	C	H	Size Valve
86910-02	1.378 (35)	.433 (11)	1/8 - 1/4 - 3/8
* 86910-08	1.968 (50)	.590 (15)	1/2 - 3/4

* Standard

86915

STEM EXTENSION KIT



Part No.	Size	L
86915-02	1/8	2.283 (58)
	1/4	2.283 (58)
	3/8	2.323 (59)
86915-08	1/2	2.677 (68)
	3/4	2.756 (70)

86920

COLOR PLATE



Part No.	Color	Size
86920-01	Blue (Standard Color)	1/8 - 1/4 - 3/8
86920-02	Red	1/8 - 1/4 - 3/8
86920-03	Green	1/8 - 1/4 - 3/8
86920-04	Yellow	1/8 - 1/4 - 3/8
86920-05	White	1/8 - 1/4 - 3/8
86921-01	Blue (Standard Color)	1/2 - 3/4
86921-02	Red	1/2 - 3/4
86921-03	Green	1/2 - 3/4
86921-04	Yellow	1/2 - 3/4
86921-05	White	1/2 - 3/4

GHINOX SERIES: MINIBALLVALVE IN STAINLESS STEEL AISI 316 L



TECHNICAL CHARACTERISTICS



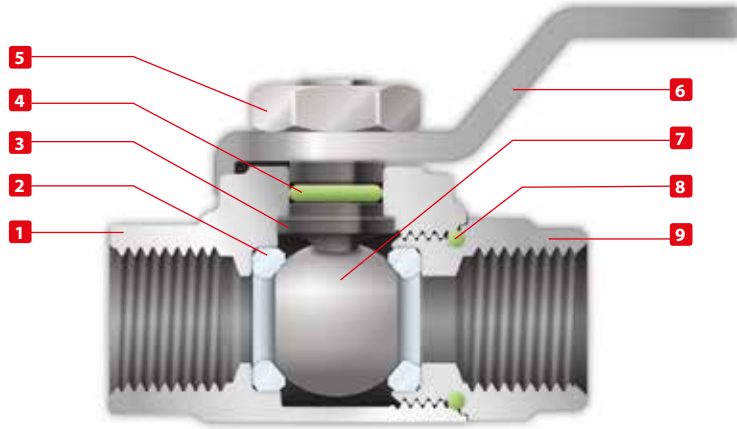
Reference Standard

1907/2006
REACH ✓

2011/65/CE
RoHS ✓

PED
2014/68/UE

SILICON FREE



Pressure Rating

Vacuum ~ 580 PSI
-0.99 bar ~ 40 bar
-0.099 MPa ~ 4 MPa



Temperatures

Minimum temperature	5 °F - 15 °C
Maximum temperature in continuous	302 °F + 150 °C
Maximum temperature for short term	356 °F + 180 °C



Media

- Compressed air
- Vacuum
- Water
- Oils



Component Parts and Materials

- 1 Stainless steel AISI 316L Body
- 2 PTFE Seats
- 3 Stainless steel AISI316L Spindle
- 4 FKM Seal O-RING
- 5 Stainless steel AISI316L Hex Nut
- 6 Stainless steel AISI316L Spindle
- 7 Stainless steel AISI316L Ball
- 8 FKM Seal O-RING
- 9 Stainless steel AISI316L Fitting



Threads

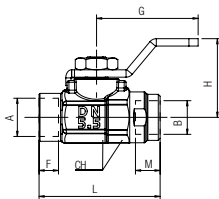
Gas in conformity with ISO7.1, BS 21, DIN 2999.

66300

FEMALE x FEMALE



Part No.	A	B	DN	CH	F	M	L	G	H
66300-02-02	0.3 (1/8)	0.3 (1/8)	0.217	0.551-0.591	0.335	0.335	1.299	1.102	0.846
66300-04-04	0.635 (1/4)	0.635 (1/4)	0.217	0.630-0.669	0.492	0.492	1.693	1.102	0.846



66310

MALE x FEMALE



Part No.	A	B	DN	CH	F	M	L	G	H
66310-02-02	0.3 (1/8)	0.3 (1/8)	0.217	0.551-0.591	0.335	0.335	1.299	1.102	0.846
66310-04-04	0.635 (1/4)	0.635 (1/4)	0.217	0.630-0.669	0.492	0.492	1.693	1.102	0.846

