

**16 MM VALVES - MECHANICAL AND MANUAL OPERATORS**



**16 MM VALVES**



**TECHNICAL CHARACTERISTICS**



**Reference Standard**

1907/2006  
**REACH** ✓

2011/65/CE  
**RoHS** ✓

PED  
2014/68/UE



**Component Parts and Materials**

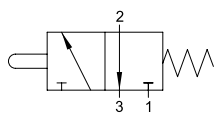
- Anodised aluminium body
- Stainless Steel Spring
- NBR seals

		1/8
	THREADED	G 1/8
	6 bar FLOW RATE with Δp 1 bar	350 NI/min
	OPERATING PRESSURE	2 ÷ 10 bar 29 ÷ 145 psi
	TEMPERATURE	min -10 °C 14 °F
		max +60 °C 140 °F

Series	Actuation	Reactuation	Function	Size
<b>0 3 V</b>	<b>G</b>	<b>0</b>	<b>3</b> <b>NC</b>	<b>0 2</b>
	G = Tappet R = Short Roller H = Lever Z = Long Roller	0 = Monostable spring return	3 = 3/2 5 = 5/2 NC = Normally closed 00 = Function not provided	02 = 1/8

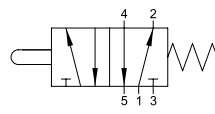
**3/2**

**TAPPET - SPRING RETURN**



**5/2**

**TAPPET - SPRING RETURN**

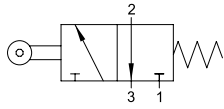


Part No.	Function	Size	Driving Force	Pack.
<b>03V G0 3 NC 02</b>	3/2 <b>NC</b>	G 1/8	19.6 N	1

Part No.	Function	Size	Driving Force	Pack.
<b>03V G0 5 00 02</b>	5/2	G 1/8	39.2 N	1

**3/2**

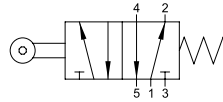
SHORT ROLLER - SPRING RETURN



Part No.	Function	Size	Driving Force	Pack.
<b>03V R0 3 NC 02</b>	3/2 <b>NC</b>	G 1/8	9.8 N	1

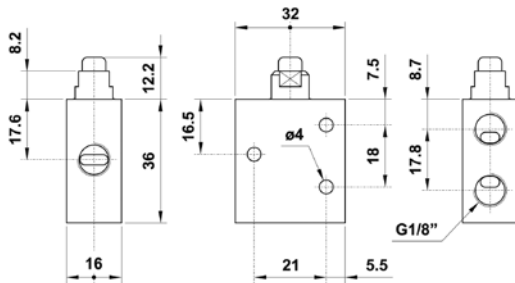
**5/2**

SHORT ROLLER - SPRING RETURN

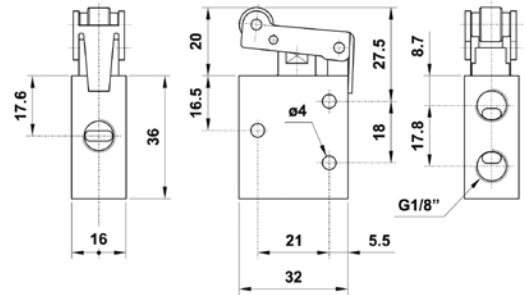


Part No.	Function	Size	Driving Force	Pack.
<b>03V R0 5 00 02</b>	5/2	G 1/8	21.5 N	1

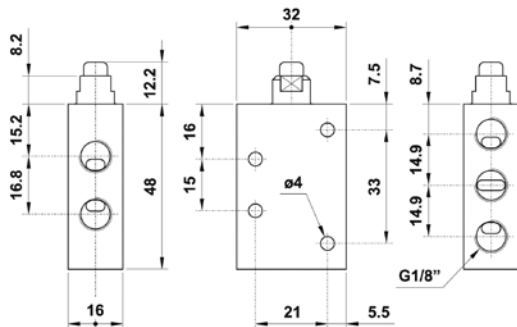
03V G0 3 NC 02



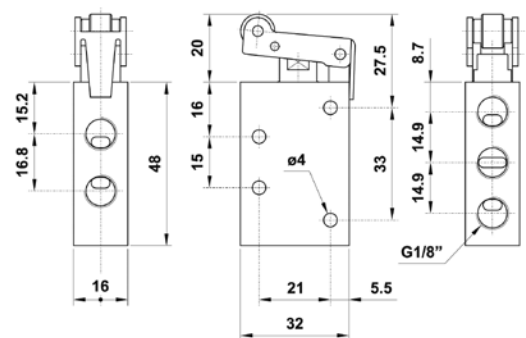
03V R0 3 NC 02



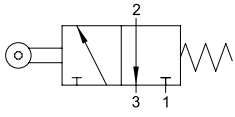
03V G0 5 00 02



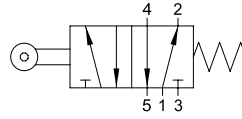
03V R0 5 00 02



**3/2**  
LONG ROLLER - SPRING RETURN



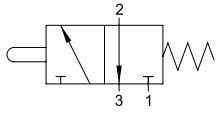
**5/2**  
LONG ROLLER - SPRING RETURN



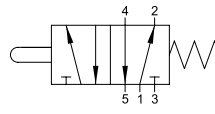
Part No.	Function	Size	Driving Force	Pack.
<b>03V Z0 3 NC 02</b>	3/2 <b>NC</b>	G 1/8	8.3 N	1

Part No.	Function	Size	Driving Force	Pack.
<b>03V Z0 5 00 02</b>	5/2	G 1/8	14.2 N	1

**3/2**  
LEVER OPERATED - SPRING RETURN



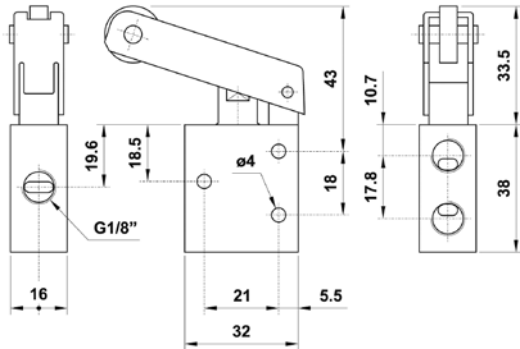
**5/2**  
LEVER OPERATED - SPRING RETURN



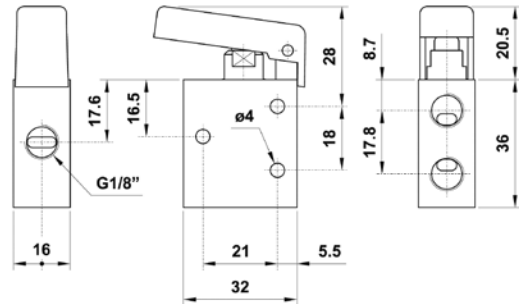
Part No.	Function	Size	Driving Force	Pack.
<b>03V H0 3 NC 02</b>	3/2 <b>NC</b>	G 1/8	7.8 N	1

Part No.	Function	Size	Driving Force	Pack.
<b>03V H0 5 00 02</b>	5/2	G 1/8	13.7 N	1

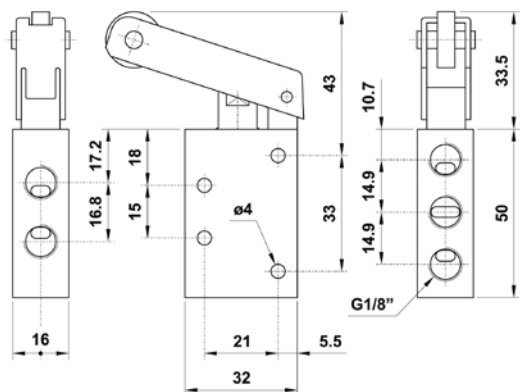
03V Z0 3 NC 02



03V H0 3 NC 02



03V Z0 5 00 02



03V H0 5 00 02

