

18 MM VDMA VALVES

05V



**18 MM SOLENOID PILOT VALVES - VDMA**



**TECHNICAL CHARACTERISTICS**



**Reference Standard**

- 1907/2006  
**REACH**
- 2011/65/CE  
**RoHS**
- PED  
2014/68/UE
- ISO 15407-1  
VDMA 24563 SIZE 02 (18 mm)



**Component Parts and Materials**

- Anodised aluminium body
- Nickel-plated spool
- NBR seals

	6 bar FLOW RATE with Δp 1 bar		550 NI/min
	OPERATING PRESSURE	Monostable	2.5 ÷ 10 bar 36.5 ÷ 145 psi
		Bistable	1 ÷ 10 bar 14.5 ÷ 145 psi
	TEMPERATURE	min	-10 °C 14 °F
		max	+60 °C 140 °F
	SOLENOID VOLTAGE		24V DC ÷ 24V AC
	MINIMUM POWER		2W - 3VA
	MANUAL CONTROL		MONOSTABLE
	Response time	Monostable	<b>TRA</b> = 13 ms <b>TRR</b> = 26 ms
		Bistable	<b>TRA=TRR</b> = 24 ms

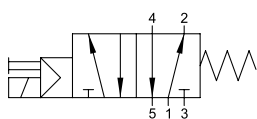
**TRA** = Response time with energised coil

**TRR** = Response time with deenergised coil

Series	Actuation	Reactuation	Function	Size
<b>0 5 V</b>	<b>S</b> S = Solenoid	<b>0</b> 0 = Monostable spring return 1 = Bistable	<b>7</b> 3 = 3/2 5 = 5/2 7 = 5/3	<b>CC</b> CC = All Ports Blocked OC = Normally exhausted OO = Function not provided
				<b>0 0</b> 00 = 24V DC 01 = 24V AC

**5/2**

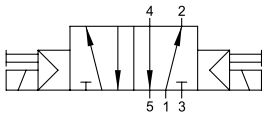
**SINGLE SOLENOID PILOT - SPRING RETURN**



Part No.	Function	Solenoid	Pack.
<b>05V S0 5 00 00</b>	5/2	24V DC	1
<b>05V S0 5 00 01</b>	5/2	24V 50/60Hz	1

**5/2**

**DOUBLE SOLENOID PILOT**

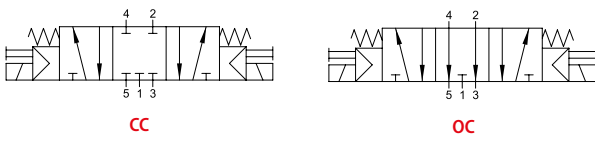


Part No.	Function	Solenoid	Pack.
05V S1 5 00 00	5/2	24V DC	1
05V S1 5 00 01	5/2	24V 50/60Hz	1



**5/3**

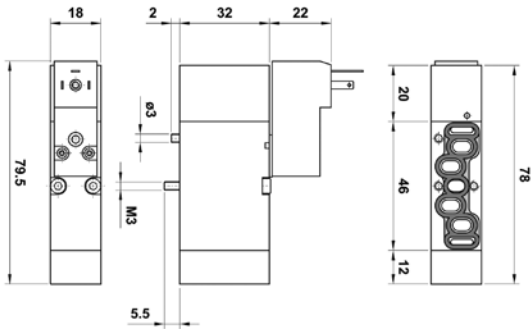
**DOUBLE SOLENOID PILOT - SPRING CENTERED**



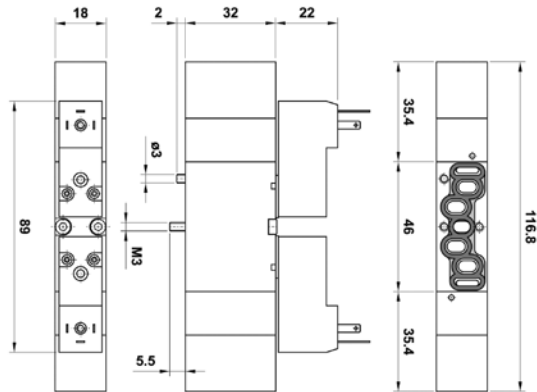
Part No.	Function	Solenoid	Pack.
05V S0 7 CC 00	5/3 CC	24V DC	1
05V S0 7 OC 00	5/3 OC	24V DC	1
05V S0 7 CC 01	5/3 CC	24V 50/60Hz	1
05V S0 7 OC 01	5/3 OC	24V 50/60Hz	1



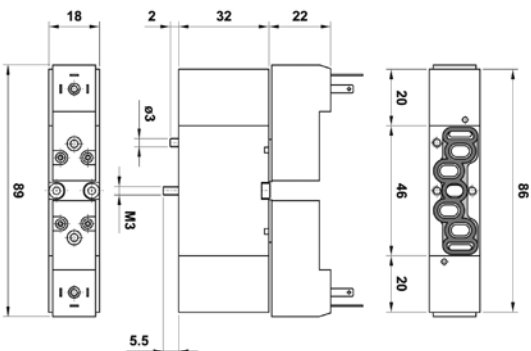
05V S0 5 00 00 05V S0 5 00 01



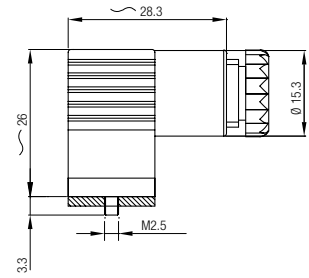
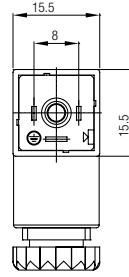
05V S0 7 CC 00 05V S0 7 OC 00 05V S0 7 CC 01 05V S0 7 OC 01



05V S1 5 00 00 05V S1 5 00 01



## Connectors 15 mm



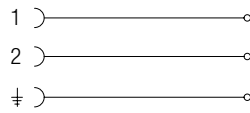
Part No.	Color	Characteristics	Pack.
<b>CON11 000 01</b>	■	STANDARD 2 PIN	1
<b>CON12 024 00</b>	□	LED + VDR 0 - 24V	1

■ Black                                      □ Transparent

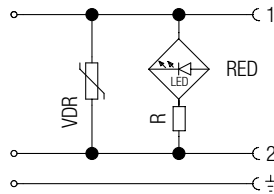
**VDR:** Fitted with varistors as surge protection device.



### Wiring



CON11 000 01



CON12 024 00

DEGREE OF PROTECTION

IP65 IEC 60529

CABLE DIAMETER

4 ÷ 6 mm

TERMINALS

DIN 4365 C

**18 MM AIR PILOT VALVES**



**TECHNICAL CHARACTERISTICS**



**Reference Standard**

1907/2006  
**REACH**

2011/65/CE  
**RoHS**

PED  
2014/68/UE

ISO 15407-1  
VDMA 24563 SIZE 02 (18 mm)



**Component Parts and Materials**

- Anodised aluminium body
- Nickel-plated spool
- NBR seals

	6 bar FLOW RATE with $\Delta p$ 1 bar	550 NI/min
	PRESSURE DRIVE	0 ÷ 10 bar 0 ÷ 145 psi
	OPERATING PRESSURE	Monostable 2 ÷ 10 bar 29 ÷ 145 psi
		Bistable 1 ÷ 10 bar 14.5 ÷ 145 psi
	TEMPERATURE	min -10 °C 14 °F
		max +60 °C 140 °F
	RESPONSE TIME	Monostable <b>TRA</b> = 12 ms
		Bistable <b>TRR</b> = 24 ms
		Bistable <b>TRA=TRR</b> = 21 ms

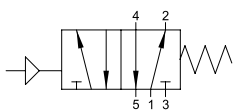
**TRA** = Response time with energised coil

**TRR** = Response time with deenergised coil

Series	Actuation	Reactuation	Function	Size
<b>0 5 V</b>	<b>P</b> P = Pneumatic	<b>0</b> 0 = Monostable spring return 1 = Bistable	<b>5</b> 5 = 5/2 7 = 5/3	<b>0 0</b> CC = All Ports Blocked OC = Normally exhausted 00 = Function not provided

**5/2**

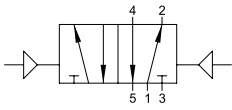
**SINGLE AIR PILOT - SPRING RETURN**



Part No.	Function	Pack.
<b>05V P0 5 00 00</b>	5/2	1

**5/2**

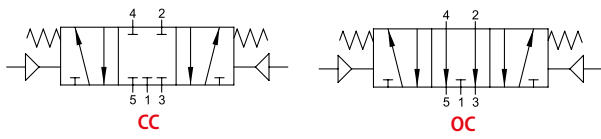
**DOUBLE AIR PILOT**



Part No.	Function	Pack.
05V P1 5 00 00	5/2	1

**5/3**

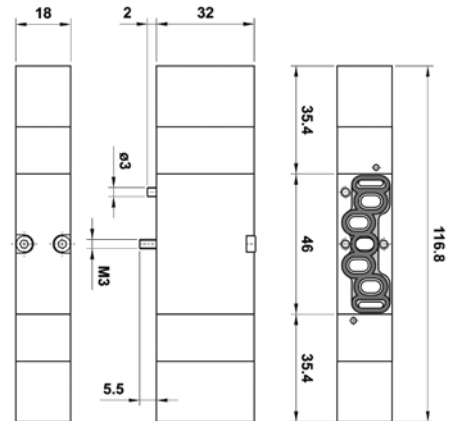
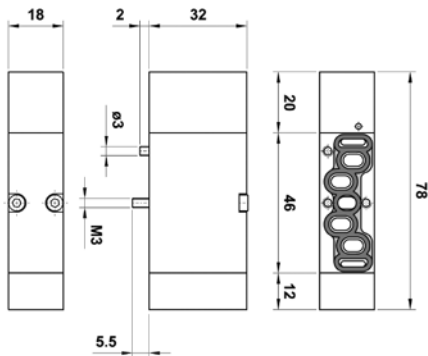
**DOUBLE AIR PILOT - SPRING CENTERED**



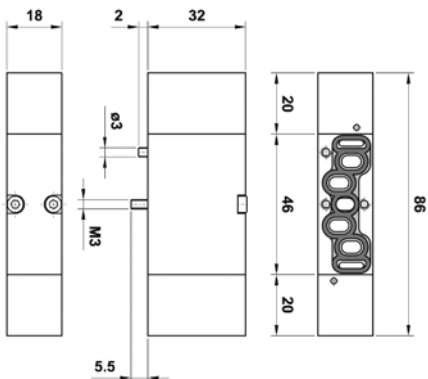
Part No.	Function	Pack.
05V P0 7 CC 00	5/3 CC	1
05V P0 7 OC 00	5/3 OC	1

05V P0 5 00 00

05V P0 7 CC 00 05V P0 7 OC 00



05V P1 5 00 00



**MODULAR BASES AND ACCESSORIES**

All the bases are supplied with screws and seals to secure the correct assembly.

**FRONT MANIFOLD END PLATE**



**REAR MANIFOLD END PLATE**



Part No.	Pack.
<b>05V B1 0 00 00</b>	1

Part No.	Pack.
<b>05V B2 0 00 00</b>	1

**MODULAR BASE**



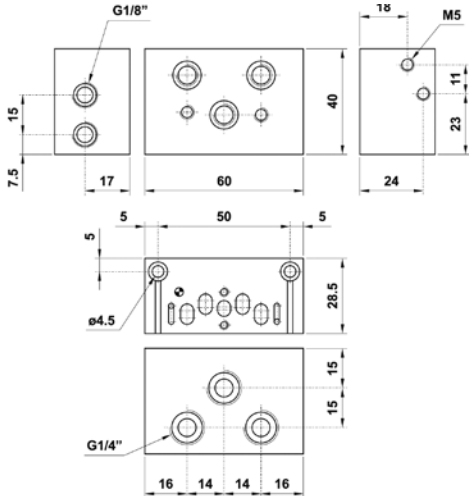
**INTERMEDIATE PRESSURE BASE**



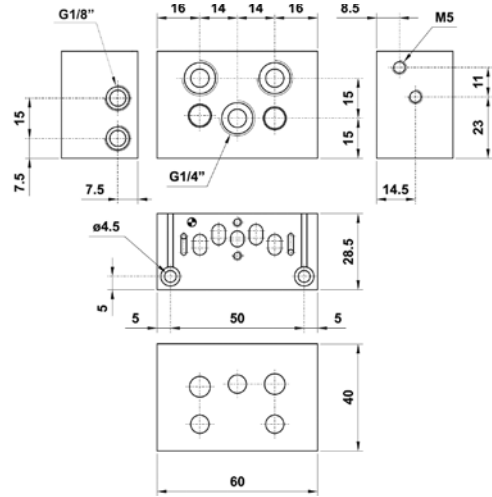
Part No.	Pack.
<b>05V B3 0 00 00</b>	1

Part No.	Pack.
<b>05V B4 0 00 00</b>	1

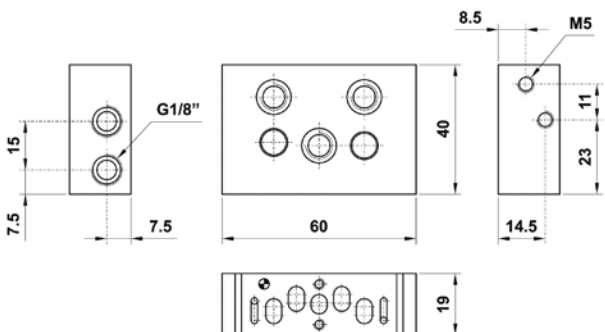
**05V B1 0 00 00**



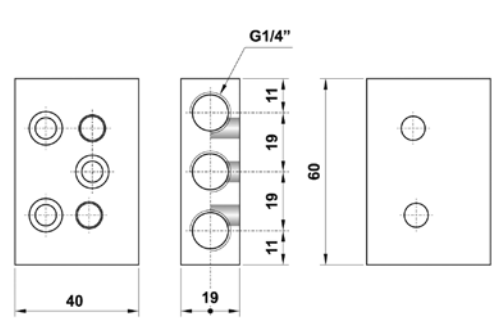
**05V B2 0 00 00**



**05V B3 0 00 00**



**05V B4 0 00 00**



**INTERMEDIATE PLUG**



Part No.	Pack.
<b>05V B8 0 00 00</b>	1

**GASKET FOR INTERMEDIATE PLUG**



The gasket is supplied with M8 dowel.

Part No.	Pack.
<b>05V B7 0 00 00</b>	1

**BLANKING PLATE**



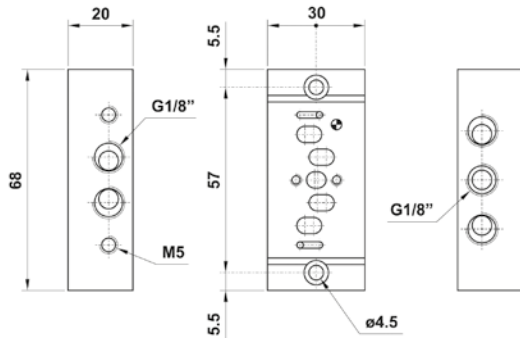
Part No.	Pack.
<b>05V B9 0 00 00</b>	1

**INDIVIDUAL BASE**

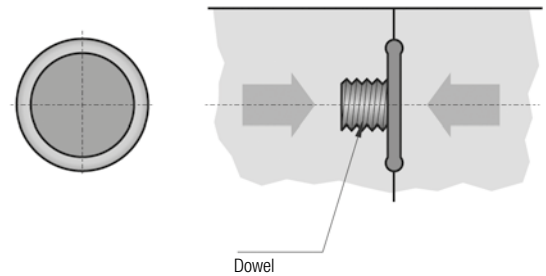


Part No.	Pack.
<b>05V B5 0 00 00</b>	1

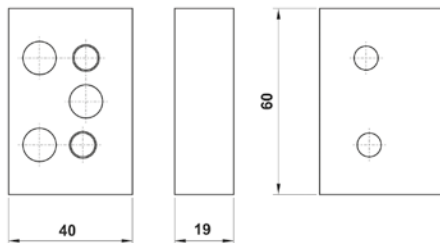
05V B5 0 00 00



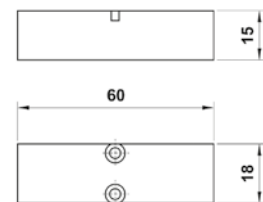
05V B7 0 00 00



05V B8 0 00 00



05V B9 0 00 00



**Example of assembling**

