

PEDAL VALVES

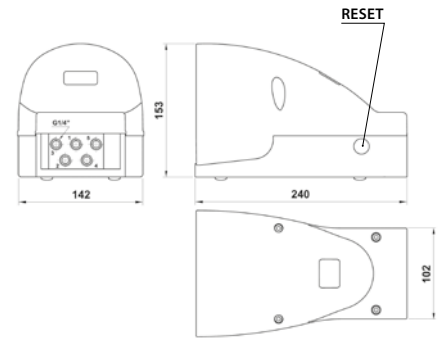
A90





Reference Standard

- 1907/2006
REACH ✓
- 2011/65/CE
RoHS ✓
- PED
2014/68/UE

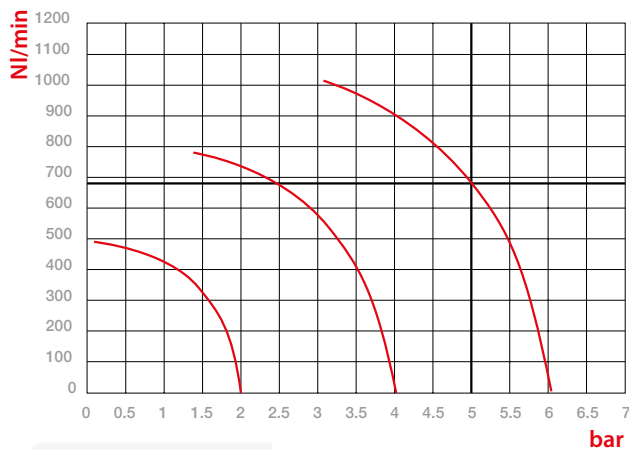


Functions

- | | |
|--|---|
| <p>5/2</p> <p>SUPPLY = (1)</p> <p>OUTPUT = (2) (4)</p> <p>EXHAUST = (3) (5)</p> | <p>3/2</p> <p>SUPPLY = (1)</p> <p>OUTPUT = (2) (4)</p> <p>EXHAUST = (3) (5)</p> |
|--|---|



Flow Rates

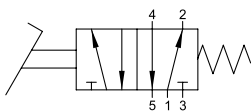


NI/min **bar**
Flow Pressures

		1/4
	THREADED	G 1/4
	OPERATING PRESSURE	2 ÷ 10 bar 29 ÷ 145 psi
	TEMPERATURE	max +60 °C 140 °F
	PROTECTION	TECHNOPOLYMER

5/2

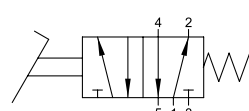
PEDAL WITH PROTECTION COVER - SPRING RETURN



Part No.	Function	Size	Pack.
06V 00 0 00 01	5/2	G 1/4	1

5/2

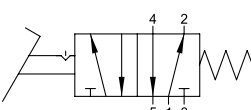
PEDAL WITH PROTECTION COVER AND SAFETY FEATURE - SPRING RETURN



Part No.	Function	Size	Pack.
06V 00 0 00 02	5/2	G 1/4	1

5/2

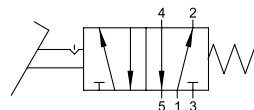
PEDAL WITH PROTECTION COVER DETENT - SPRING RETURN



Part No.	Function	Size	Pack.
06V 00 0 00 03	5/2	G 1/4	1

5/2

PEDAL WITH DETENT AND SAFETY LOCK - SPRING RETURN



Part No.	Function	Size	Pack.
06V 00 0 00 04	5/2	G 1/4	1