

NAMUR VALVES

A80



SOLENOID PILOT VALVES



TECHNICAL CHARACTERISTICS



Reference Standard

1907/2006
REACH ✓

2011/65/CE
RoHS ✓

PED
2014/68/UE

ATEX
2014/34/UE

VDI/VDE 3845



Component Parts and Materials

- Anodised and painted aluminium body
- Chemical nickel-plated spool
- NBR seals

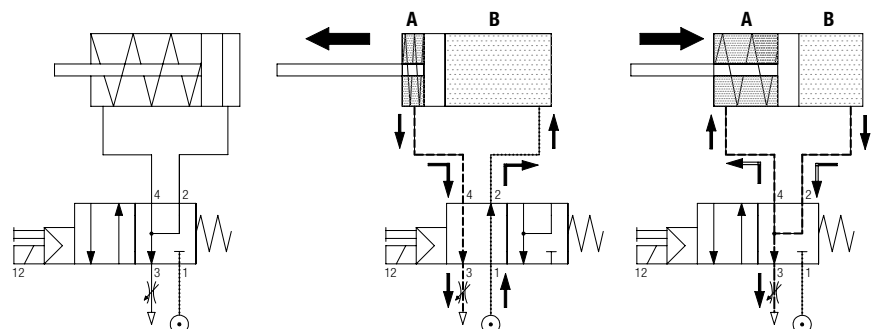
		1/4
	THREADED	G 1/4 - NPTF 1/4
	6 bar FLOW RATE with Δp 1 bar	1200 NI/min
	OPERATING PRESSURE	Monostable 2 ÷ 10 bar 29 ÷ 145 psi
		Bistable 1 ÷ 10 bar 14.5 ÷ 145 psi
	TEMPERATURE	min -10 °C 14 °F
		max +60 °C 140 °F
	SOLENOID VOLTAGE	24V DC - 12V DC - 24V AC 110V AC - 220V AC
	MINIMUM POWER	2W - 3VA
	MANUAL CONTROL	BISTABLE
	TORQUE OF TIGHTENING THE NUT SOLENOID	0.6 Nm

Series	Actuation	Reactivation	Function	Size	Thread
0 8 V	S	0	4	0 3	
	S = Solenoid	0 = Monostable spring return 1 = Bistable	4 = 4/2 5 = 5/2	03 = 1/4	= G N = NPTF
			NC = Normally closed 00 = Function not provided		



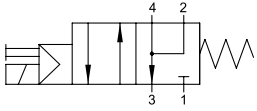
Schematic diagram of the valve NAMUR 4/2

To prevent the return phase of the external dirty air enters the chamber in the cylinder, the air escaping from the chamber B is routed to the same room.



4/2

SINGLE SOLENOID PILOT - SPRING RETURN

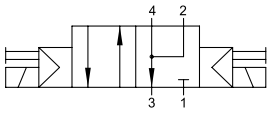


Part No.	Function	Size	Pack.
08V S0 4 NC 03	4/2 NC	G 1/4	1

Part No.	Function	Size	Pack.
08V S0 4 NC 03 N	4/2 NC	NPTF 1/4	1

4/2

DOUBLE SOLENOID PILOT

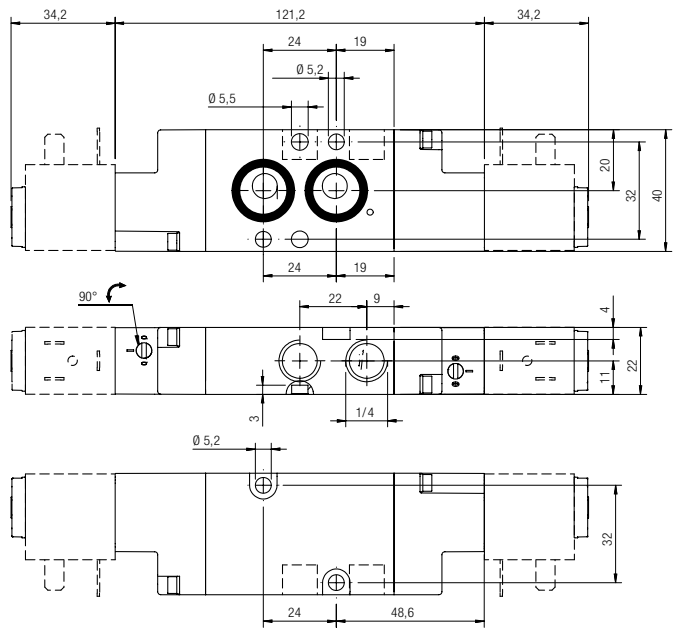
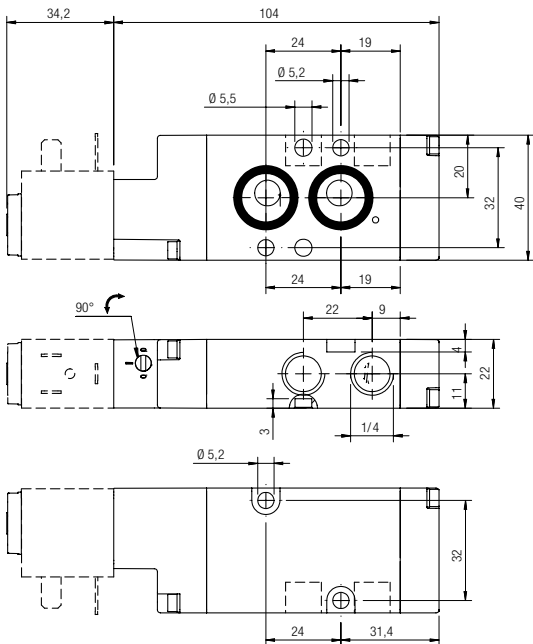


Part No.	Function	Size	Pack.
08V S1 4 00 03	4/2	G 1/4	1

Part No.	Function	Size	Pack.
08V S1 4 00 03 N	4/2	NPTF 1/4	1

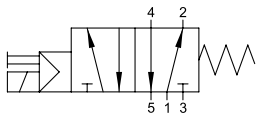
08V S0 4 NC 03 08V S0 4 NC 03 N

08V S1 4 00 03 08V S1 4 00 03 N



5/2

SINGLE SOLENOID PILOT - SPRING RETURN

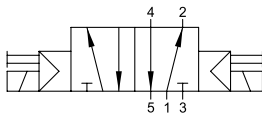


Part No.	Function	Size	Pack.
08V S0 5 00 03	5/2	G 1/4	1

Part No.	Function	Size	Pack.
08V S0 5 00 03 N	5/2	NPTF 1/4	1

5/2

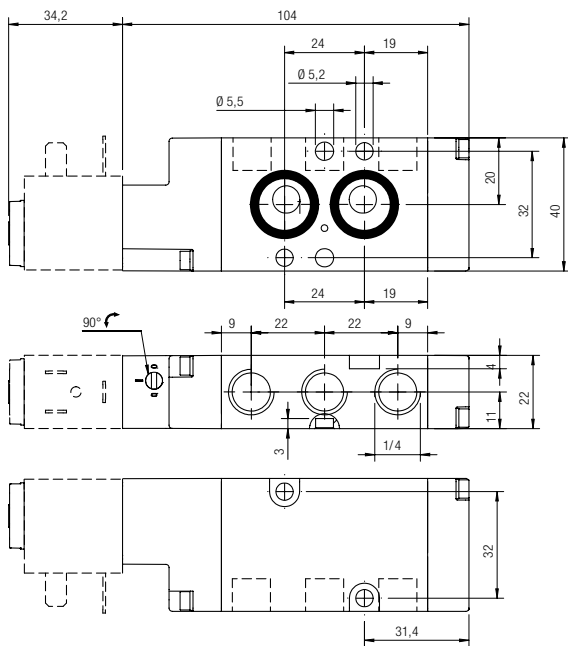
DOUBLE SOLENOID PILOT



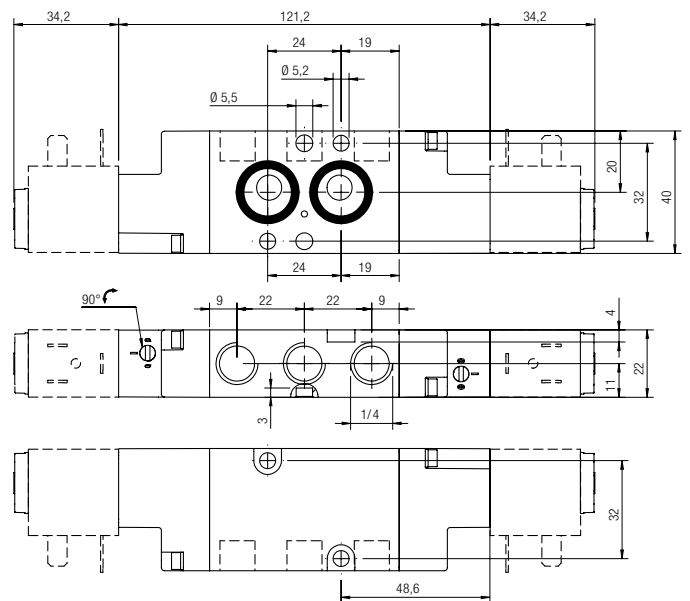
Part No.	Function	Size	Pack.
08V S1 5 00 03	5/2	G 1/4	1

Part No.	Function	Size	Pack.
08V S1 5 00 03 N	5/2	NPTF 1/4	1

08V S0 5 00 03 08V S0 5 00 03 N

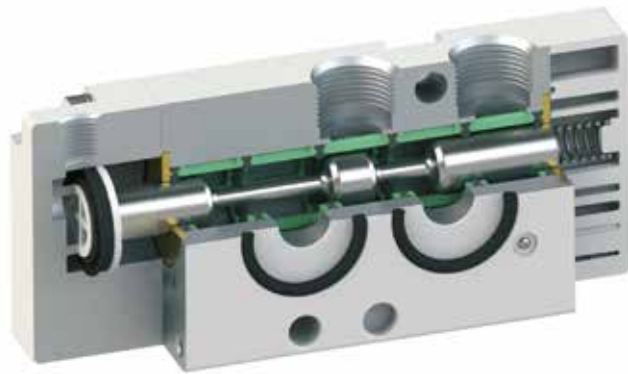


08V S1 5 00 03 08V S1 5 00 03 N



AIR PILOT VALVES

TECHNICAL CHARACTERISTICS



Reference Standard

1907/2006 **REACH** ✓

2011/65/CE **RoHS** ✓

PED 2014/68/UE

ATEX 2014/34/UE

VDI/VDE 3845



Component Parts and Materials

- Anodised and painted aluminium body
- Chemical nickel-plated spool
- NBR seals

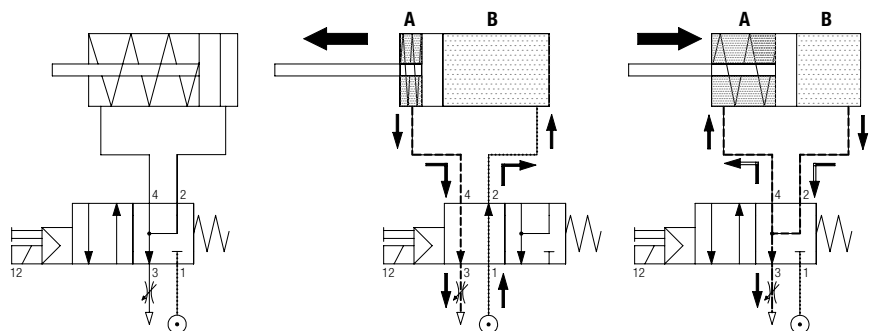
		1/4
	THREADED	G 1/4 - NPTF 1/4
	6 bar FLOW RATE with Δp 1 bar	1200 NI/min
	OPERATING PRESSURE	0 ÷ 10 bar 0 ÷ 145 psi
	PRESSURE DRIVE	Monostable 2 ÷ 10 bar 29 ÷ 145 psi
		Bistable 1 ÷ 10 bar 14.5 ÷ 145 psi
	TEMPERATURE	min -10 °C 14 °F
		max +60 °C 140 °F

Series	Actuation	Reactuation	Function	Size	Thread	
0 8 V	P P = Pneumatic	0 0 = Monostable spring return 1 = Bistable	4 4 = 4/2 5 = 5/2	NC NC = Normally closed 00 = Function not provided	0 3 03 = 1/4	 = G N = NPTF



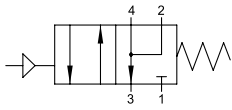
Schematic diagram of the valve NAMUR 4 / 2

To prevent the return phase of the external dirty air enters the chamber in the cylinder, the air escaping from the chamber B is routed to the same room.



4/2

SINGLE AIR PILOT - SPRING RETURN

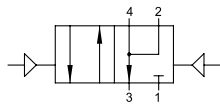


Part No.	Function	Size	Pack.
08V P0 4 NC 03	4/2 NC	G 1/4	1

Part No.	Function	Size	Pack.
08V P0 4 NC 03 N	4/2 NC	NPTF 1/4	1

4/2

DOUBLE AIR PILOT

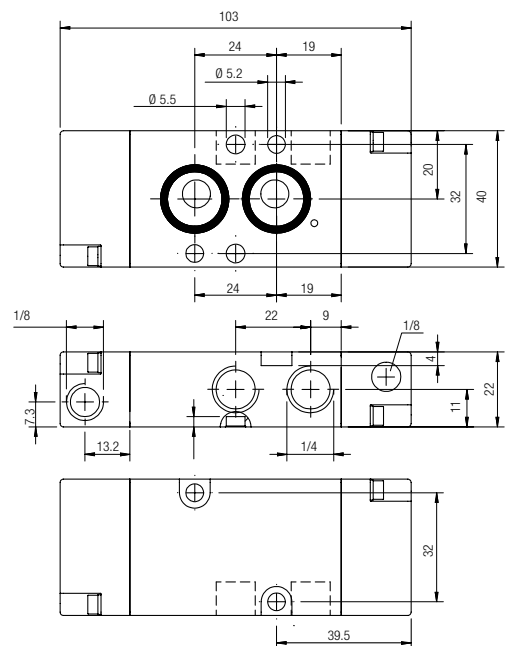
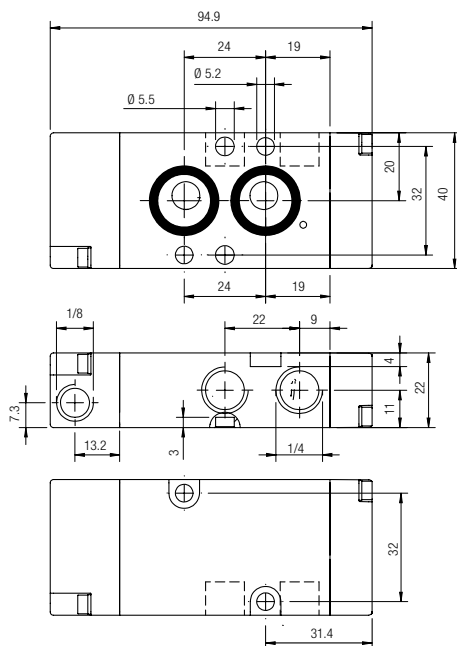


Part No.	Function	Size	Pack.
08V P1 4 00 03	4/2	G 1/4	1

Part No.	Function	Size	Pack.
08V P1 4 00 03 N	4/2	NPTF 1/4	1

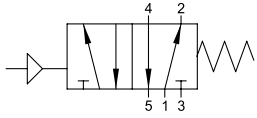
08V P0 4 NC 03 08V P0 4 NC 03 N

08V P1 4 00 03 08V P1 4 00 03 N



5/2

SINGLE AIR PILOT - SPRING RETURN

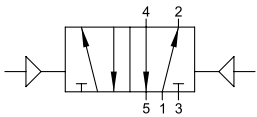


Part No.	Function	Size	Pack.
08V P0 5 00 03	5/2	G 1/4	1

Part No.	Function	Size	Pack.
08V P0 5 00 03 N	5/2	NPTF 1/4	1

5/2

DOUBLE AIR PILOT



Part No.	Function	Size	Pack.
08V P1 5 00 03	5/2	G 1/4	1

Part No.	Function	Size	Pack.
08V P1 5 00 03 N	5/2	NPTF 1/4	1

08V P0 5 00 03 08V P0 5 00 03 N

08V P1 5 00 03 08V P1 5 00 03 N

