

## 89 Series

 <b>89000</b> Pg. 1.5	 <b>89000</b> Pg. 1.5	 <b>89010</b> Pg. 1.5	 <b>89110</b> Pg. 1.5	 <b>89110</b> Pg. 1.5	 <b>89210</b> Pg. 1.6	 <b>89210</b> Pg. 1.6	 <b>89222</b> Pg. 1.6	 <b>89222</b> Pg. 1.6
 <b>89030</b> Pg. 1.7	 <b>89055</b> Pg. 1.7	 <b>89105</b> Pg. 1.7	 <b>89040</b> Pg. 1.7	 <b>89050</b> Pg. 1.7	 <b>89130</b> Pg. 1.8	 <b>89230</b> Pg. 1.8	 <b>89310</b> Pg. 1.8	 <b>89500</b> Pg. 1.8
 <b>88610B</b> Pg. 1.9	 <b>89700</b> Pg. 1.9	 <b>50980</b> Pg. 1.9	 <b>50991</b> Pg. 1.9	 <b>50006</b> Pg. 1.9				

# METALLIC PUSH-TO-CONNECT FITTINGS FOR INCH TUBE

**89 Series**



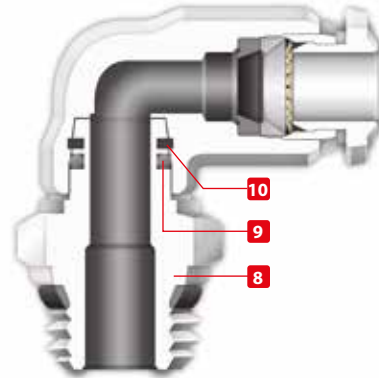
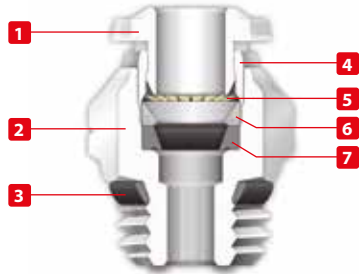


**TECHNICAL CHARACTERISTICS**



**Reference Standard**

- 1907/2006  
**REACH** ✓
- 2011/65/CE  
**RoHS** ✓
- PED  
2014/68/UE
- ISO  
14743:2004
- SILICON  
FREE



**Pressure Rating**

Vacuum ~ 290 PSI  
-0.99 bar ~ 20 bar  
-0.099 MPa ~ 2.0 MPa



**Temperatures Rating**

<b>NBR</b> -4° F ~ 176° F -20° C ~ 80° C	<b>EPDM on request</b> -40° F ~ 266° F -40° C ~ 130° C	<b>FKM on request</b> 5° F ~ 266° F -15° C ~ 130° C
--	--	---



**Media**

- Compressed Air
- Vacuum
- Water
- Steam (FKM required)



**Applications**

- Pneumatic Automation
- Automotive
- Textile, Packaging
- Compressed Air Circuit
- Vacuum



**Advantages:**

- 1 The 303 Stainless Steel gripper ensures a tight clamp for tubes of any material without damaging the tube's surface. The secure connection between the tube and the fitting will hold up to severe conditions such as impact and vibrations.
- 2 The shape of the safety ring and the molded seal perfectly seal off the tube, creating a vacuum.
- 3 Series with several types of threads:  
**SWIFTFIT**  
**NPTF**  
**UNF**
- 4 All straight fittings can be tightened with an Allen wrench because of our internal hex design. This enables the end user to tighten the fitting in spaces too small for an openend wrench.
- 5 Our rotating Swivel Elbow fittings are equipped with a safety ring that enables the fitting to rotate without losing a tight seal.



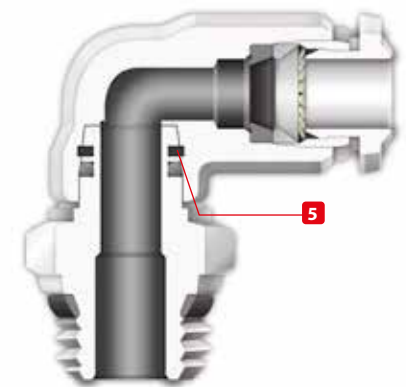
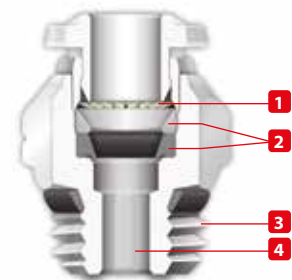
**Component Parts and Materials**

- 1 Metallic Release Collet
- 2 Nickel Plated Brass Body
- 3 NBR Thread Seal
- 4 Nickel Plated Brass Sleeve
- 5 303 Stainless Steel Gripper
- 6 Technopolymer Safety Ring
- 7 NBR Molded Seal
- 8 Nickel Plated Thread Brass Body
- 9 NBR Seal
- 10 Safety Ring



**Tubing Compatibility**

- Nylon 6 - 11 -12
- Polyethylene
- Polyurethane ("98 Shore A for best result)
- PTFE
- FEP



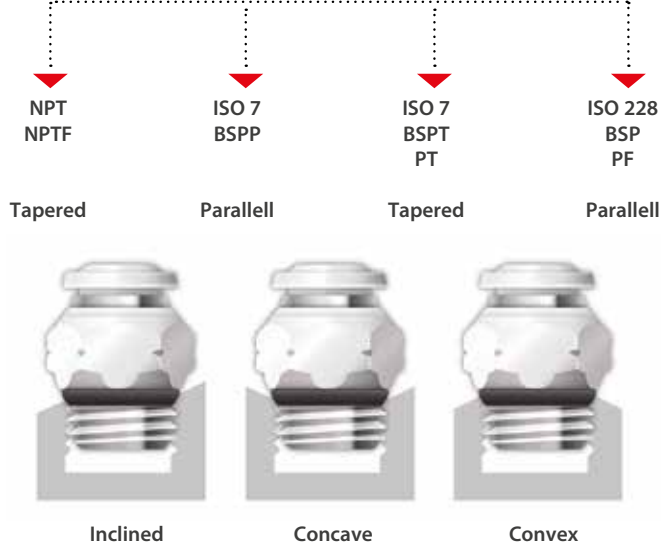


**THREADS & ADVANTAGES**



**SWIFFFIT**  
Universal thread

*One fitting... Endless possibilities*



Our **SWIFFFIT** universal fittings also work on non-flat surfaces without compromising an air-tight seal.

The **SWIFFFIT** Universal Thread has been designed to offer the following advantages to the end users:

- Reduced overall length
- Smaller hex dimensions compared to parallel threads
- Fits with various parallel and tapered threads
- All **SWIFFFIT** fittings have been equipped with threads and an NBR thread seal that will universally connect to all thread types.

**Torque Specifications**

Recommended Torque		
Thread Size	Min.	Max.
1/8	5 Nm	7 Nm
1/4	5 Nm	7 Nm
3/8	5 Nm	7 Nm
1/2	5 Nm	7 Nm



**UNF Threads**



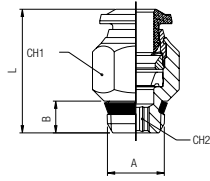
The **UNF** Thread has been designed to offer the following advantages to the end users:

- Standard USA design
- Designed for use in UNF connections with an integrated NBR o-ring that provides a perfect seal
- Completely reusable

**Torque Specifications**

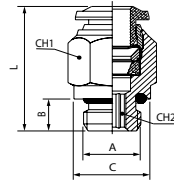
Recommended Torque		
Thread Size	Min.	Breaking torque
10/32	0.8 Nm	3.2 Nm

**89000**  
STRAIGHT MALE



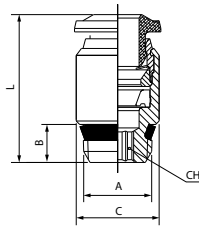
\* For part numbers with 10-32 threads

**UNF**



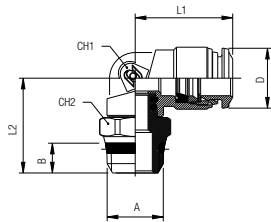
Part No.	Tube	A	B	C	L	CH1	CH2
*89000-02-32	1/8	10/32	.197 (5)	.310 (8)	.748 (19)	.315 (8)	.079 (2)
89000-02-02	1/8	1/8	.217 (5,5)	-	.650 (16,5)	.433 (11)	.079 (2)
89000-02-04	1/8	1/4	.276 (7)	-	.728 (18,5)	.551 (14)	.079 (2)
*89000-53-32	5/32 (4)	10/32	.197 (5)	.310 (8)	.827 (21)	.394 (10)	.079 (2)
89000-53-02	5/32 (4)	1/8	.217 (5,5)	-	.709 (18)	.433 (11)	.118 (3)
89000-53-04	5/32 (4)	1/4	.276 (7)	-	.748 (19)	.551 (14)	.118 (3)
*89000-04-32	1/4	10/32	.197 (5)	.390 (10)	.966 (24,5)	.512 (13)	.079 (2)
89000-04-02	1/4	1/8	.217 (5,5)	-	.846 (21,5)	.512 (13)	.157 (4)
89000-04-04	1/4	1/4	.276 (7)	-	.807 (20,5)	.551 (14)	.157 (4)
89000-04-06	1/4	3/8	.295 (7,5)	-	.905 (23)	.669 (17)	.157 (4)
89000-05-02	5/16 (8)	1/8	.217 (5,5)	-	.965 (24,5)	.551 (14)	.197 (5)
89000-05-04	5/16 (8)	1/4	.276 (7)	-	.866 (22)	.551 (14)	.236 (6)
89000-05-06	5/16 (8)	3/8	.295 (7,5)	-	.906 (23)	.669 (17)	.236 (6)
89000-05-08	5/16 (8)	1/2	.354 (9)	-	.925 (23,5)	.827 (21)	.236 (6)
89000-06-02	3/8	1/8	.217 (5,5)	-	1.082 (27,5)	.669 (17)	.197 (5)
89000-06-04	3/8	1/4	.276 (7)	-	1.082 (27,5)	.669 (17)	.276 (7)
89000-06-06	3/8	3/8	.295 (7,5)	-	1.023 (25,5)	.669 (17)	.276 (7)
89000-06-08	3/8	1/2	.354 (9)	-	1.023 (25,5)	.827 (21)	.276 (7)
89000-08-02	1/2	1/8	.217 (5,5)	-	1.260 (32)	.787 (20)	.197 (5)
89000-08-04	1/2	1/4	.276 (7)	-	1.222 (31)	.787 (20)	.276 (7)
89000-08-06	1/2	3/8	.295 (7,5)	-	1.222 (31)	.787 (20)	.354 (9)
89000-08-08	1/2	1/2	.354 (9)	-	1.222 (31)	.827 (21)	.394 (10)

**89010**  
STRAIGHT MALE WITH INTERNAL HEX



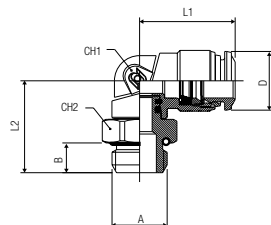
Part No.	Tube	A	B	C	L	CH
89010-53-02	5/32 (4)	1/8	.295 (7,5)	.394 (10)	.748 (19)	.118 (3)
89010-05-02	5/16 (8)	1/8	.295 (7,5)	.551 (14)	1.004 (25,5)	.197 (5)
89010-05-04	5/16 (8)	1/4	.433 (11)	.551 (14)	.984 (25)	.236 (6)

**89110**  
SWIVEL ELBOW



\* For part numbers with 10-32 threads

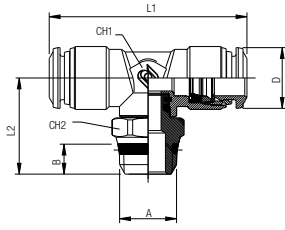
**UNF**



Part No.	Tube	A	B	L1	L2	CH1	CH2	D
*89110-02-32	1/8	10/32	.177 (4,5)	.630 (16)	.689 (17,5)	.354 (9)	.315 (8)	.394 (10)
89110-02-02	1/8	1/8	.217 (5,5)	.650 (16,5)	.768 (19,5)	.354 (9)	.511 (13)	.394 (10)
89110-02-04	1/8	1/4	.276 (7)	.650 (16,5)	.827 (21)	.354 (9)	.591 (15)	.394 (10)
*89110-53-32	5/32 (4)	10/32	.177 (4,5)	.689 (17,5)	.689 (17,5)	.354 (9)	.315 (8)	.394 (10)
89110-53-02	5/32 (4)	1/8	.217 (5,5)	.708 (18)	.768 (19,5)	.354 (9)	.511 (13)	.394 (10)
89110-53-04	5/32 (4)	1/4	.276 (7)	.708 (18)	.827 (21)	.354 (9)	.591 (15)	.394 (10)
*89110-04-32	1/4	10/32	.177 (4,5)	.827 (21)	.768 (19,5)	.433 (11)	.433 (11)	.492 (12,5)
89110-04-02	1/4	1/8	.217 (5,5)	.827 (21)	.846 (21,5)	.433 (11)	.511 (13)	.493 (12,5)
89110-04-04	1/4	1/4	.276 (7)	.827 (21)	.906 (23)	.433 (11)	.591 (15)	.493 (12,5)
89110-04-06	1/4	3/8	.295 (7,5)	.827 (21)	.926 (23,5)	.433 (11)	.669 (17)	.493 (12,5)
89110-05-02	5/16 (8)	1/8	.217 (5,5)	.886 (22,5)	.886 (22,5)	.472 (12)	.511 (13)	.571 (14,5)
89110-05-04	5/16 (8)	1/4	.276 (7)	.886 (22,5)	.886 (22,5)	.472 (12)	.591 (15)	.571 (14,5)
89110-05-06	5/16 (8)	3/8	.295 (7,5)	.886 (22,5)	.906 (23)	.472 (12)	.669 (17)	.571 (14,5)
89100-05-08	5/16 (8)	1/2	.354 (9)	.886 (22,5)	1.004 (25,5)	.472 (12)	.511 (13)	.571 (14,5)
89110-06-02	3/8	1/8	.217 (5,5)	1.043 (26,5)	.945 (24)	.551 (14)	.551 (14)	.669 (17,5)
89110-06-04	3/8	1/4	.276 (7)	1.043 (26,5)	1.043 (26,5)	.551 (14)	.630 (16)	.669 (17,5)
89110-06-06	3/8	3/8	.295 (7,5)	1.043 (26,5)	.965 (24,5)	.551 (14)	.669 (17)	.669 (17,5)
89110-06-08	3/8	1/2	.354 (9)	1.043 (26,5)	1.063 (27)	.551 (14)	.827 (21)	.669 (17,5)
89110-08-04	1/2	1/4	.276 (7)	1.240 (31,5)	1.130 (28,7)	.630 (16)	.630 (16)	.846 (21,5)
89110-08-06	1/2	3/8	.295 (7,5)	1.240 (31,5)	1.043 (26,5)	.630 (16)	.669 (17)	.846 (21,5)
89110-08-08	1/2	1/2	.354 (9)	1.240 (31,5)	1.142 (29)	.630 (16)	.827 (21)	.846 (21,5)

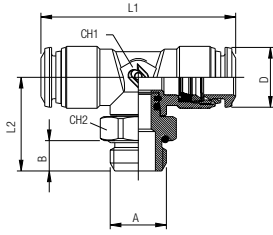
**89210**

SWIVEL BRANCH TEE



\* For part numbers with 10-32 threads

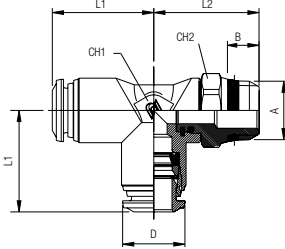
**UNF**



Part No.	Tube	A	B	L1	L2	CH1	CH2	D
*89210-02-32	1/8	10/32	.177 (4,5)	1.300 (33)	.670 (17)	.354 (9)	.315 (8)	.394 (10)
89210-02-02	1/8	1/8	.216 (5,5)	1.338 (34)	.669 (17)	.354 (9)	.511 (13)	.394 (10)
89210-02-04	1/8	1/4	.275 (7)	1.338 (34)	.787 (20)	.354 (9)	.591 (15)	.394 (10)
*89210-02-32	1/8	10/32	.177 (4,5)	1.300 (33)	.670 (17)	.354 (9)	.315 (8)	.394 (10)
89210-53-02	5/32 (4)	1/8	.216 (5,5)	1.338 (34)	.787 (20)	.354 (9)	.511 (13)	.394 (10)
89210-53-04	5/32 (4)	1/4	.275 (7)	1.338 (34)	.846 (21,5)	.354 (9)	.591 (15)	.394 (10)
*89210-04-32	1/4	10/32	.177 (4,5)	1.654 (42)	.807 (20,5)	.433 (11)	.433 (11)	.492 (12,5)
89210-04-02	1/4	1/8	.216 (5,5)	1.574 (40)	.787 (20)	.433 (11)	.511 (13)	.493 (12,5)
89210-04-04	1/4	1/4	.275 (7)	1.574 (40)	.846 (21,5)	.433 (11)	.629 (16)	.493 (12,5)
89210-04-06	1/4	3/8	.295 (7,5)	1.574 (40)	.866 (22)	.433 (11)	.669 (17)	.493 (12,5)
89210-05-02	5/16 (8)	1/8	.216 (5,5)	1.772 (45)	1.004 (25,5)	.512 (13)	.511 (13)	.571 (14,5)
89210-05-04	5/16 (8)	1/4	.275 (7)	1.772 (45)	1.004 (25,5)	.512 (13)	.591 (15)	.571 (14,5)
89210-05-06	5/16 (8)	3/8	.295 (7,5)	1.772 (45)	1.024 (26)	.512 (13)	.669 (17)	.571 (14,5)
89210-06-02	3/8	1/8	.216 (5,5)	2.047 (52)	1.043 (26,5)	.551 (14)	.551 (14)	.669 (17,5)
89210-06-04	3/8	1/4	.275 (7)	2.047 (52)	1.141 (29)	.551 (14)	.630 (16)	.669 (17,5)
89210-06-06	3/8	3/8	.295 (7,5)	2.047 (52)	1.062 (27)	.551 (14)	.669 (17)	.669 (17,5)
89210-06-08	3/8	1/2	.354 (9)	2.047 (52)	1.220 (31)	.551 (14)	.827 (21)	.669 (17,5)
89210-08-04	1/2	1/4	.275 (7)	2.402 (61)	1.240 (31,5)	.630 (16)	.630 (16)	.846 (21,5)
89210-08-06	1/2	3/8	.295 (7,5)	2.402 (61)	1.161 (29,5)	.630 (16)	.669 (17)	.846 (21,5)
89210-08-08	1/2	1/2	.354 (9)	2.402 (61)	1.259 (32)	.630 (16)	.827 (21)	.846 (21,5)

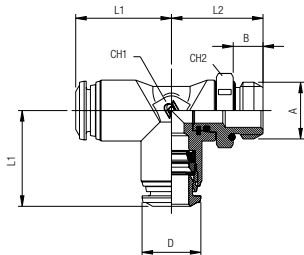
**89222**

SWIVEL RUN TEE



\* For part numbers with 10-32 threads

**UNF**



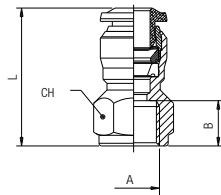
Part No.	Tube	A	B	L1	L2	CH1	CH2	D
*89222-02-32	1/8	10/32	.177 (4,5)	.650 (16,5)	.670 (17)	.354 (9)	.315 (8)	.394 (10)
89222-02-02	1/8	1/8	.216 (5,5)	.650 (16,5)	.728 (18,5)	.354 (9)	.511 (13)	.394 (10)
89222-02-04	1/8	1/4	.334 (7)	.650 (16,5)	.807 (20,5)	.354 (9)	.591 (15)	.394 (10)
*89222-53-32	5/32 (4)	10/32	.177 (4,5)	.670 (17)	.709 (18)	.354 (9)	.315 (8)	.394 (10)
89222-53-02	5/32 (4)	1/8	.216 (5,5)	.649 (17)	.787 (20)	.354 (9)	.511 (13)	.394 (10)
89222-53-04	5/32 (4)	1/4	.275 (7)	.649 (17)	.846 (21,5)	.354 (9)	.591 (15)	.394 (10)
*89222-04-32	1/4	10/32	.177 (4,5)	.827 (21)	.807 (20,5)	.433 (11)	.433 (11)	.492 (12,5)
89222-04-02	1/4	1/8	.216 (5,5)	.846 (21,5)	.787 (20)	.433 (11)	.511 (13)	.493 (12,5)
89222-04-04	1/4	1/4	.275 (7)	.846 (21,5)	.846 (21,5)	.433 (11)	.591 (15)	.493 (12,5)
89222-04-06	1/4	3/8	.295 (7,5)	.846 (21,5)	.866 (22)	.433 (11)	.669 (17)	.493 (12,5)
89222-05-02	5/16 (8)	1/8	.216 (5,5)	.886 (22,5)	.945 (24)	.512 (13)	.511 (13)	.571 (14,5)
89222-05-04	5/16 (8)	1/4	.275 (7)	.886 (22,5)	.945 (24)	.512 (13)	.591 (15)	.571 (14,5)
89222-05-06	5/16 (8)	3/8	.295 (7,5)	.886 (22,5)	1.062 (27)	.512 (13)	.669 (17)	.571 (14,5)
89222-06-02	3/8	1/8	.216 (5,5)	1.062 (27)	1.023 (26)	.551 (14)	.551 (14)	.669 (17,5)
89222-06-04	3/8	1/4	.275 (7)	1.062 (27)	1.043 (26,5)	.551 (14)	.630 (16)	.669 (17,5)
89222-06-06	3/8	3/8	.295 (7,5)	1.062 (27)	1.062 (27)	.551 (14)	.669 (17)	.669 (17,5)
89222-06-08	3/8	1/2	.354 (9)	1.062 (27)	1.141 (29)	.551 (14)	.827 (21)	.669 (17,5)
89222-08-04	1/2	1/4	.275 (7)	1.240 (31,5)	1.240 (31,5)	.630 (16)	.630 (16)	.846 (21,5)
89222-08-06	1/2	3/8	.295 (7,5)	1.240 (31,5)	1.240 (31,5)	.630 (16)	.787 (20)	.846 (21,5)
89222-08-08	1/2	1/2	.354 (9)	1.240 (31,5)	1.279 (32,5)	.630 (16)	.827 (21)	.846 (21,5)



**89030**

STRAIGHT FEMALE

**NPTF**

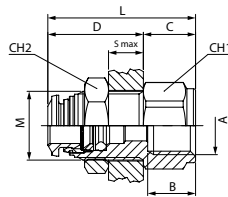


Part No.	Tube	A	B	L	CH
89030-02-02	1/8	1/8	.374 (9,5)	.945 (24)	.512 (13)
89030-02-04	1/8	1/4	.531 (13,5)	1.142 (29)	.630 (16)
89030-53-02	5/32 (4)	1/8	.374 (9,5)	.965 (24,5)	.512 (13)
89030-53-04	5/32 (4)	1/4	.531 (13,5)	1.161 (29,5)	.630 (16)
89030-04-02	1/4	1/8	.374 (9,5)	1.024 (26)	.512 (13)
89030-04-04	1/4	1/4	.531 (13,5)	1.220 (31)	.630 (16)
89030-06-04	3/8	1/4	.531 (13,5)	1.358 (34,5)	.709 (18)
89030-06-06	3/8	3/8	.531 (13,5)	1.358 (34,5)	.787 (20)

**89055**

FEMALE BULKHEAD CONNECTOR

**NPTF**

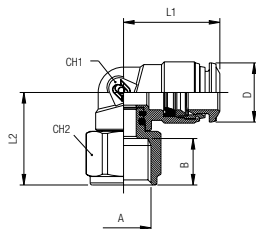


Part No.	Tube	A	B	M	S max	CH1	CH2	C	D	L
89055-53-02	5/32 (4)	1/8	.374 (9,5)	M12X1	.275 (7)	.591 (15)	.669 (17)	.394 (10)	.748 (19)	1.141 (29)
89055-53-04	5/32 (4)	1/4	.531 (13,5)	M12X1	.275 (7)	.630 (16)	.669 (17)	.591 (15)	.748 (19)	1.339 (34)
89055-04-02	1/4	1/8	.374 (9,5)	M14X1	.315 (8)	.630 (16)	.669 (17)	.394 (10)	.826 (21)	1.221 (31)
89055-04-04	1/4	1/4	.531 (13,5)	M14X1	.315 (8)	.630 (16)	.669 (17)	.591 (15)	.826 (21)	1.417 (36)
89055-04-06	1/4	3/8	.531 (13,5)	M14X1	.315 (8)	.787 (20)	.669 (17)	.591 (15)	.826 (21)	1.417 (36)
89055-05-02	5/16 (8)	1/8	.374 (9,5)	M16X1	.315 (8)	.709 (18)	.748 (19)	.394 (10)	.866 (22)	1.260 (32)
89055-05-04	5/16 (8)	1/4	.531 (13,5)	M16X1	.315 (8)	.709 (18)	.748 (19)	.472 (12)	.866 (22)	1.339 (34)
89055-05-06	5/16 (8)	3/8	.531 (13,5)	M16X1	.315 (8)	.787 (20)	.748 (19)	.591 (15)	.866 (22)	1.457 (37)
89055-06-06	3/8	3/8	.531 (13,5)	M20X1	.374 (9,5)	.945 (24)	.945 (24)	.551 (14)	1.003 (25,5)	1.557 (39,5)
89055-08-06	1/2	3/8	.531 (13,5)	M22X1	.413 (10,5)	.945 (24)	1.024 (26)	.591 (15)	1.083 (27,5)	1.673 (42,5)
89055-08-08	1/2	1/2	.690 (17,5)	M22X1	.413 (10,5)	.945 (24)	1.024 (26)	.787 (20)	1.083 (27,5)	1.870 (47,5)

**89105**

FEMALE ELBOW

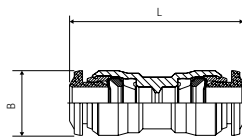
**NPTF**



Part No.	Tube	A	B	L1	L2	CH1	CH2	D
89105-53-02	5/32 (4)	1/8	.374 (9,5)	.688 (17,5)	.688 (17,5)	.354 (9)	.511 (13)	.394 (10)
89105-53-04	5/32 (4)	1/4	.531 (13,5)	.688 (17,5)	.787 (20)	.354 (9)	.629 (16)	.394 (10)
89105-04-02	1/4	1/8	.374 (9,5)	.846 (21,5)	.748 (19)	.433 (11)	.511 (13)	.492 (12,5)
89105-04-04	1/4	1/4	.531 (13,5)	.846 (21,5)	.846 (21,5)	.433 (11)	.629 (16)	.492 (12,5)
89105-06-02	3/8	1/8	.374 (9,5)	1.062 (27)	.905 (23)	.511 (13)	.511 (13)	.689 (17,5)
89105-06-04	3/8	1/4	.531 (13,5)	1.062 (27)	.944 (24)	.629 (16)	.629 (16)	.689 (17,5)

**89040**

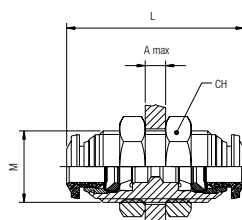
UNION



Part No.	Tube	Tube	L	B
89040-02	1/8		.334 (8,5)	1.023 (26)
89040-53	5/32 (4)		.413 (10,5)	1.200 (30,5)
89040-04-53	1/4	5/32 (4)	.492 (12,5)	1.299 (33)
89040-04	1/4		.492 (12,5)	1.339 (34)
89040-05	5/16 (8)		.571 (14,5)	1.417 (36)
89040-04-06	3/8	1/4	.688 (17,5)	1.614 (41)
89040-06-08	3/8	1/2	.807 (20,5)	1.850 (47)
89040-06	3/8		.688 (17,5)	1.614 (41)
89040-08	1/2		.807 (20,5)	1.850 (47)

**89050**

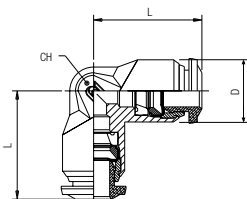
BULKHEAD UNION



Part No.	Tube	M	L	CH	A max
89050-02	1/8	M10x1	1.023 (26)	.551 (14)	.197 (5)
89050-53	5/32 (4)	M12x1	1.240 (31,5)	.669 (17)	.276 (7)
89050-04	1/4	M14x1	1.378 (35)	.669 (17)	.374 (9,5)
89050-05	5/16 (8)	M16x1	1.457 (37)	.748 (19)	.413 (10,5)
89050-06	3/8	M20x1	1.693 (42)	.945 (24)	.492 (12,5)
89050-08	1/2	M22x1	1.890 (48)	1.024 (26)	.650 (16,5)

**89130**

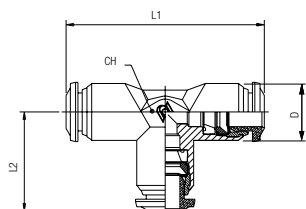
ELBOW UNION



Part No.	Tube	L	CH	D
89130-02	1/8	.649 (16,5)	.354 (9)	.394 (10)
89130-53	5/32 (4)	.669 (17)	.354 (9)	.394 (10)
89130-04	1/4	.826 (21)	.433 (11)	.492 (12,5)
89130-05	5/16 (8)	.886 (22,5)	.512 (13)	.551 (14)
89130-06	3/8	1.024 (26)	.630 (16)	.689 (17,5)
89130-08	1/2	1.200 (30,5)	.748 (19)	.846 (21,5)

**89230**

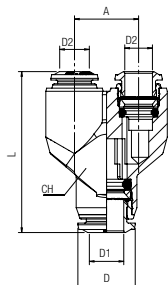
UNION TEE



Part No.	Tube	L1	L2	CH	D
89230-02	1/8	1.229 (33)	.669 (17)	.354 (9)	.394 (10)
89230-53	5/32 (4)	1.339 (34)	.669 (17)	.354 (9)	.394 (10)
89230-04	1/4	1.654 (42)	.827 (21)	.433 (11)	.492 (12,5)
89230-05	5/16 (8)	1.772 (45)	.866 (22,5)	.512 (13)	.551 (14)
89230-06	3/8	2.087 (53)	1.043 (26,5)	.630 (16)	.689 (17,5)
89230-08	1/2	2.402 (61)	1.201 (30,5)	.748 (19)	.846 (21,5)

**89310**

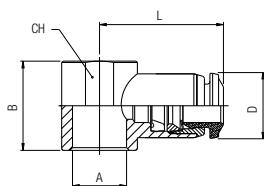
UNION Y



Part No.	Tube	A	L	CH	D
89310-02	1/8	.394 (10)	1.142 (29)	.433 (11)	.394 (10)
89310-53	5/32 (4)	.433 (11)	1.260 (32)	.433 (11)	.394 (10)
89310-04	1/4	.531 (13,5)	1.437 (36,5)	.511 (13)	.492 (12,5)
89310-05	5/16 (8)	.610 (15,5)	1.514 (41)	.511 (13)	.551 (14)
89310-06	3/8	.728 (18,5)	1.890 (48)	.708 (18)	.689 (17,5)

**89500**

SINGLE BANJO BODY



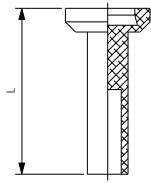
Part No.	Tube	A	B	L	CH	D
89500-02-02	1/8	1/8	.591 (15)	.748 (19)	.551 (14)	.394 (10)
89500-53-32	5/32 (4)	10/32	.492 (12,5)	.748 (19)	-	.394 (10)
89500-53-02	5/32 (4)	1/8	.591 (15)	.827 (21)	.551 (14)	.394 (10)
89500-04-02	1/4	1/8	.591 (15)	.886 (22,5)	.551 (14)	.492 (12,5)
89500-04-04	1/4	1/4	.669 (17)	.984 (25)	.709 (18)	.492 (12,5)
89500-05-02	5/16 (8)	1/8	.591 (15)	.945 (24)	.551 (14)	.551 (14)
89500-05-04	5/16 (8)	1/4	.669 (17)	1.024 (26)	.709 (18)	.551 (14)
89500-05-06	5/16 (8)	3/8	.787 (20)	1.102 (28)	.827 (21)	.551 (14)
89500-06-04	3/8	1/4	.669 (17)	1.142 (29)	.709 (18)	.689 (17,5)
89500-06-06	3/8	3/8	.787 (20)	1.201 (30,5)	.827 (21)	.689 (17,5)
89500-08-06	1/2	3/8	.787 (20)	1.260 (32)	.827 (21)	.846 (21,5)
89500-08-08	1/2	1/2	.945 (24)	1.378 (35)	.984 (25)	.846 (21,5)

For BANJO STEM assemblies see 10.7/10.8/10.9



**88610B**

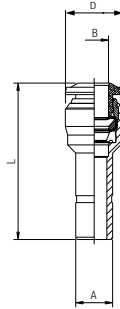
NYLON PLUG



Part No.	Tube	L
88610B-02	1/8	.708 (18)
88610B-53	5/32 (4)	.925 (23,5)
88610B-04	1/4	.964 (24,5)
88610B-05	5/16 (8)	1.023 (26)
88610B-06	3/8	1.122 (28,5)
88610B-08	1/2	1.122 (28,5)

**89700**

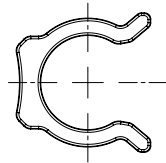
TUBE REDUCER



Part No.	A	B	L	D
89700-04-02	1/4	1/8	1.181 (30)	.394 (10)
89700-04-53	1/4	5/32 (4)	1.181 (30)	.394 (10)
89700-05-53	5/16 (8)	5/32 (4)	1.299 (33)	.394 (10)
89700-06-04	3/8	1/4	1.397 (35,5)	.492 (12,5)
89700-06-05	3/8	5/16 (8)	1.397 (35,5)	.551 (14)
89700-08-04	1/2	1/4	1.693 (43)	.492 (12,5)
89700-08-06	1/2	3/8	1.693 (43)	.689 (17,5)

**50980**

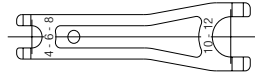
SECURITY CLIP



Part No.	Tube
50980-53	5/32 (4)
50980-04	1/4 (6)
50980-05	5/16 (8)
50980-06	3/8 (10)
50980-08	1/2 (12)

**50991**

TOOL FOR DISASSEMBLING



Part No.
50991

**50006**

THREAD PACKING FOR SWIFTFIT TAPER THREADS



Part No.	Thread
50006-02	1/8
50006-04	1/4
50006-06	3/8
50006-08	1/2

